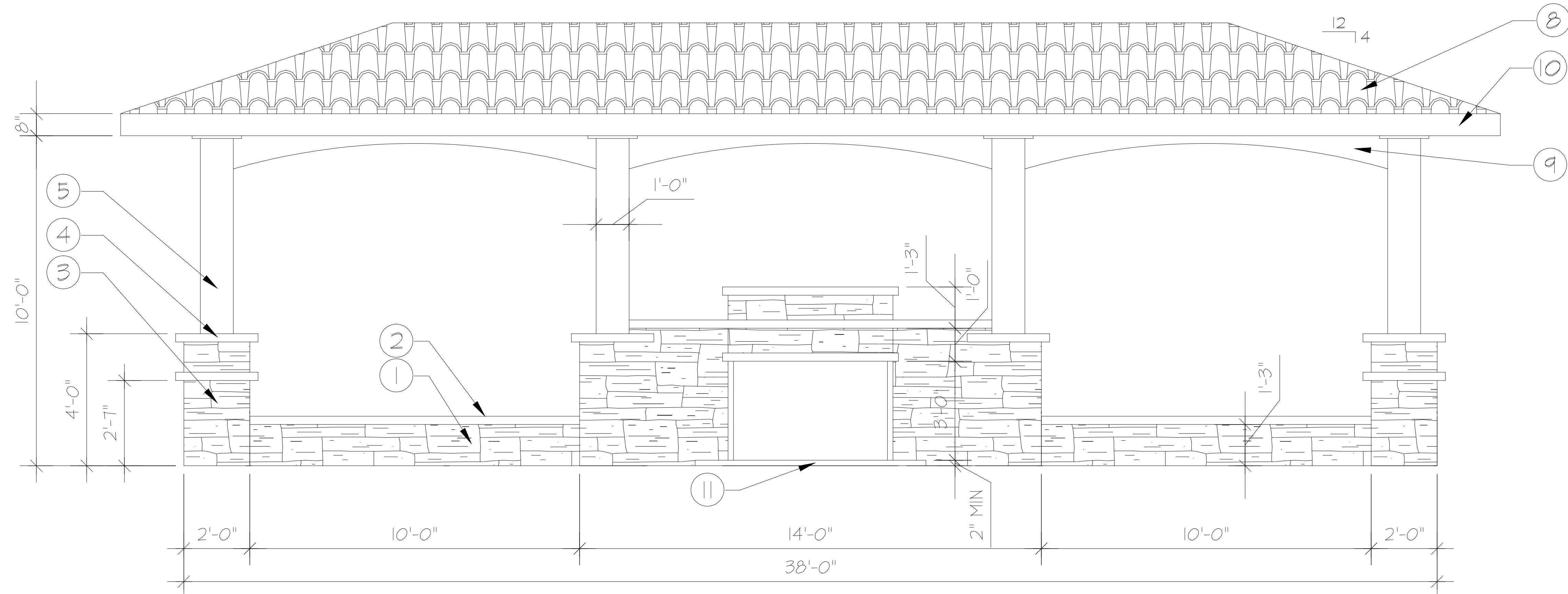
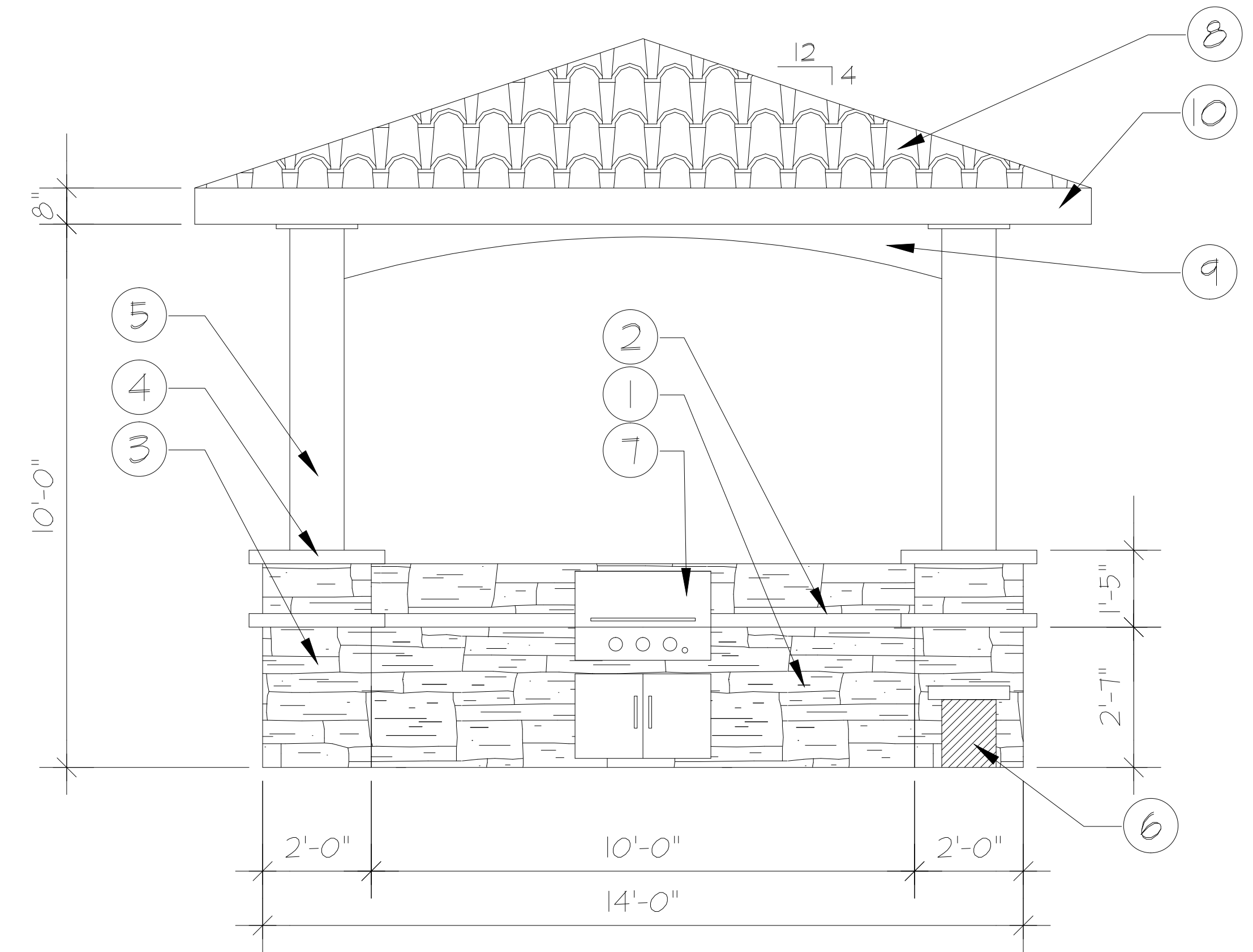


REVISIONS

△	ISSUED FOR PERMIT
△	01/29/2014
△	ISSUED FOR BID
△	01/29/2014
△	ISSUED FOR CONST.
△	04/09/2014
	DWG. NAME
	A2.3
	DATE
	06/16/2014
	DESCRIPTION
	HARDSCAPE DETAILS
	SHEET
	A2.3



① PAVILION ELEVATION  
 1/2"



② PAVILION ELEVATION  
 1/2"

- ① STONE VENEER COUNTER - CMU CORE, MAX HEIGHT OF COUNTER TOP 34" A.F.F.
- ② 3" CAST IN PLACE CONC. COUNTERTOP, SMOOTH FINISH, COLOR TO BE SELECTED, 3" OVERHANG, TYP.
- ③ STONE VENEER COLUMN, MATERIAL S.1 - ALL FOUR OUTER COLUMNS
- ④ STONE CAP - ALL FOUR OUTER COLUMNS
- ⑤ STUCCO COLUMN
- ⑥ SEAT WALL - STONE VENEER, CMU CORE, MAX HEIGHT 18" AFF & STONE CAP, MATERIAL S.2
- ⑦ BUILT-IN 30" GRILL - MANUFACTURER: RH PETERSON, STYLE: 30" BUILT IN STAINLESS STEEL (#30NB-00SP), BRAND: AOG - CONTROLS FOR GRILL SHALL NOT REQUIRE TIGHT PINCHING, OR TWISTING OF THE WRIST TO OPERATE
- ⑧ CONCRETE TILE ROOF, SLOPE: 4/12
- ⑨ STUCCO VENEER ARCH W/ 20'-0" RADIUS
- ⑩ FACIA TO MATCH BUILDINGS - 1'-0" OVERHANG
- ⑪ HEARTH SHALL EXTEND AT LEAST 20 INCHES IN FRONT OF, AND AT LEAST 12 INCHES BEYOND, EACH SIDE OF THE FIREPLACE OPENING.

EXTERIOR MATERIAL LEGEND	
MOUNTAIN BLEND ASHLAR (MBA)	
PEGOS BLUFF STONE	
COMP. ROOF - CURRIED RAISIN OR SIMILAR	
10" LAP SIDING - KHAKI	
TILE ROOF - CURRIED RAISIN	
STUCCO - CHOCOLATE MOUSSE 300	
CEDAR TRIM, FACIA AND BRACKETS	
RAILING - BRONZE	