

# LIGHT FIXTURE SCHEDULE

TYPE	DESCRIPTION	MANUFACTURER	MODEL NUMBER	LAMP	CONTACT	REMARKS
F1	PENDANT	THE URBAN ELECTRIC CO.	"COZY" MA-1160HR	1-60W-S	--	FINISH: BLACK PEWTER, ACCENT FINISH: WHITE, GLASS: STANDARD CLEAR 6" SQ CANOPY. DIMS: 16" W X 23" H. MOUNT AT 90" A.F.F.
F2	WALL SCONCE	Y LIGHTING	"KODO" 3099/ 120 WALL	--	--	FINISH: CR CHROME. SEE ID-7.2 ELEVATION "M" NORTH FOR MOUNTING HEIGHTS. DIMS: 4.7" DIA X 2.2" EXT
F3	WALL SCONCE	DEL REY	8" CYLINDER VERTICAL LAMP UP/ DOWNLIGHT	26 W QUAD TUBE	--	FINISH: BRUSHED METAL ANODIZED. CLEAR AZLAK HAZE REFLECTOR. DIMS: 8" DIA X 22" HT X 13" EXT. MOUNT AT 80" O.C A.F.F.
F4	WALL SCONCE	LAMP PLUS	STRATUS COLLECTION #22647	60 WATT BULB	--	FINISH: BRUSHED STEEL. DIMS: 12 3/4" H X 8 1/2" W X 12" EXT X 5 1/4" BACKPLATE. MOUNT AT 62" O.C A.F.F.
F5	RECESSED LINEAR	PRUDENTIAL LIGHTING	BIONIC MODULAR 4" SYSTEM - STANDARD	--	--	ORDER DETAILS: FLSH-X-04-ABW-TMW-01-X-X-X-X. FINISH: TEXTURED MATTE WHITE. FIXTURE TO BE FLUSH WITH CEILING.
F6	LINEAR PENDANT	TECH LIGHTING	CROSSROADS LINEAR SUSPENSION	LED	--	FINISH: 700LSORS. DIMS: 46" L X 6" H W X 15.75" CANOPY X 144" ADJ CABLE. MOUNT AT 90" A.F.F TO BOTTOM OF FIXTURE.
F7	PENDANT	Y LIGHTING	DELANCY PENDANT	CFL 120 VOLT	--	SHADE COLOR: WHITE. CANOPY COLOR: SATIN NICKEL. ITEM CODE: TEC-2KD-700TDDELP.
F8	WALL SCONCE	EUREKA	STUBBY STACK 2038B	3000K LED	--	FINISH: CHROME STRUCTURE, WHITE DIFFUSER, WHITE BAFFLE. DIMS: 5" W X 6.5" H. MOUNT AT 66" O.C A.F.F. UNLESS NOTED OTHERWISE.
F9	RECESSED CAN	SOUTHLAND LIGHTING	SL-R18CH	HIGH WATT	--	FINISH: ALUMINUM REFLECTOR. 6" DIA HIGH DENSITY CAN FOR 15'-0" CEILING
F10	RECESSED DOWNLIGHT	DELRAY LIGHTING	7" SQ OPEN TRIMLESS SINGLE LAMP DOWNLIGHT	--	--	FINISH: WHITE REFLECTOR. DIMS: 7" SQ.
F11	PENDANT	EUREKA	AVA PENDANT	32W CFL	--	FINISH: SHADE: WHITE POWDER COAT, DIFFUSER: WHITE ACRYLIC, CANOPY: WHITE. DIMS: 17.5" DIA X 12" H. MOUNT AT 72" A.F.F TO BOTTOM OF FIXTURE.
F12	PENDANT	DEL REY LIGHTING	STICK COMPLETA 2 SEAMLESS T5	C2F4X4HO FLOURESCENT	--	FINISH: ALUMINUM BODY WITH FROSTED LENS. DIMS: 4"X4" SQ. MOUNT 102" A.F.F TO BOTTOM OF FIXTURE.
F13	CEILING MOUNT	LUMENS	ASHLAND FLUSH MOUNT LARGE	60 WATT	--	FINISH: POLISHED NICKEL. DIMS: 5.75" H X 16.25" DIA.
F14	LINEAR PENDANT	PRUDENTIAL LIGHTING	P40 LINEAR P40-2T-04-SAL-YPE-D1	--	--	FINISH: PEWTER. MOUNT AT 96" A.F.F TO BOTTOM OF FIXTURE.
F15	SURFACE DOWNLIGHT	EUREKA	FLOAT: 46640-1X1-CHR-CLR	--	--	FINISH: POLISHED CHROME, DIFFUSER: CLEAR. DIMS: 6.5" SQ X 8" H.
F16	WALL SCONCE	SONNEMAN	4801.01 TRANSPARENCE	A19 HALF CHROME BULB MED BASE	--	FINISH: POLISHED CHROME. DIMS: 7" W X 8" H. MOUNT AT 82" O.C A.F.F.
F17	CEILING MOUNT	SONNEMAN	4800.01 TRANSPARENCE	A19 HALF CHROME BULB MED BASE	--	FINISH: POLISHED CHROME. DIMS: 7" W X 7" H X 6" EXT.
F18	WALL MOUNT	FINELITE	SERIES 17 ADA WM	T8	--	ORDER DETAILS: S17-VCF-PF-4-T8-SC-00-D0W-X-000-X. FINISH: WHITE. DIMS: 4'-0" L X 4.7" HT X 3.95" EXT. MOUNT AT 84" A.F.F.
F19	PENDANT	EUREKA	RUBATO 4253	CFL	--	FINISH: CHROME, DIFFUSER: ACRYLIC TRANSLUCENT WHITE. DIMS: 16.5" DIA X 14.75" H X 120" CUSTOM CABLE LENGTH. MOUNT AT 84" A.F.F.
F20	PENDANT	TECH LIGHTING	SOCO - SINGLE PORT CANOPY	#300BH485 INCANDESCENT HALF CHROME	--	FINISH: CORD: ORANGE, SOCKET: MODERN SATIN NICKEL. CORD LENGTH 8'-0". MOUNT AT VARIOUS HEIGHTS. SEE ID-7.1 ELEVATION G.
F21	UPLIGHT	Y LIGHTING	CRICKET D60	F16 LED	--	FINISH: ANODIZED ALUMINUM WITH TEMPERED GLASS. MOUNT 6" AWAY FROM WALL.
F22	PENDANT	TECH LIGHTING	SOCO - SINGLE PORT CANOPY	#300BH485 INCANDESCENT HALF CHROME	--	FINISH: CORD: ORANGE, SOCKET: MODERN SATIN NICKEL. CORD LENGTH 8'-0". MOUNT AT VARIOUS HEIGHTS. SEE ID-7.2 ELEVATION "K" WEST.
F23	LINEAR WALL RECESSED	PRUDENTIAL LIGHTING	BIONIC MODULAR 4" SYSTEM - STANDARD	--	--	ORDER DETAILS: FLSH-X-04-ABW-TMW-01-X-X-X-X. FINISH: TEXTURED WHITE. TO BE FLUSH WITH WALL.
F24	PENDANT	TECH LIGHTING	SOCO - SINGLE PORT CANOPY W/ SWAG HOOK	#300BH480 INCANDESCENT SQUIRREL CAGE	--	FINISH: CORD: WHITE, SOCKET: MODERN SATIN NICKEL. CORD LENGTH 96". MOUNT AT 8'-0" A.F.F./
F25	WALL WASHER	WAC LIGHTING	MODEL 136 ONE LIGHT GIMBAL	--	--	FINISH: WHITE INTERIOR. SQUARE TRIMLESS. DIMS" 8.2" SQ.

## LEGEND

SQUARE DOWNLIGHT	RECESSED STRIP LIGHT
DOWNLIGHT	LINEAR SUSPENSION
MINI PENDANT	EXIT SIGN. FILL INDICATES FACE(S)
WALL WASHER	LIGHT SWITCH
WALL SCONCE	LIGHT SWITCH 3-WAY
PENDANT	LIGHT SWITCH DIMMER
FLUSH MOUNT	THERMOSTAT
FLUSH MOUNT	EXISTING TO REMAIN
FLUSH MOUNT	NEW
RECESSED WALL STRIP LIGHT	EXISTING TO BE REMOVED
	EXISTING REINSTATED IN NEW LOCATION
	CEILING HEIGHT

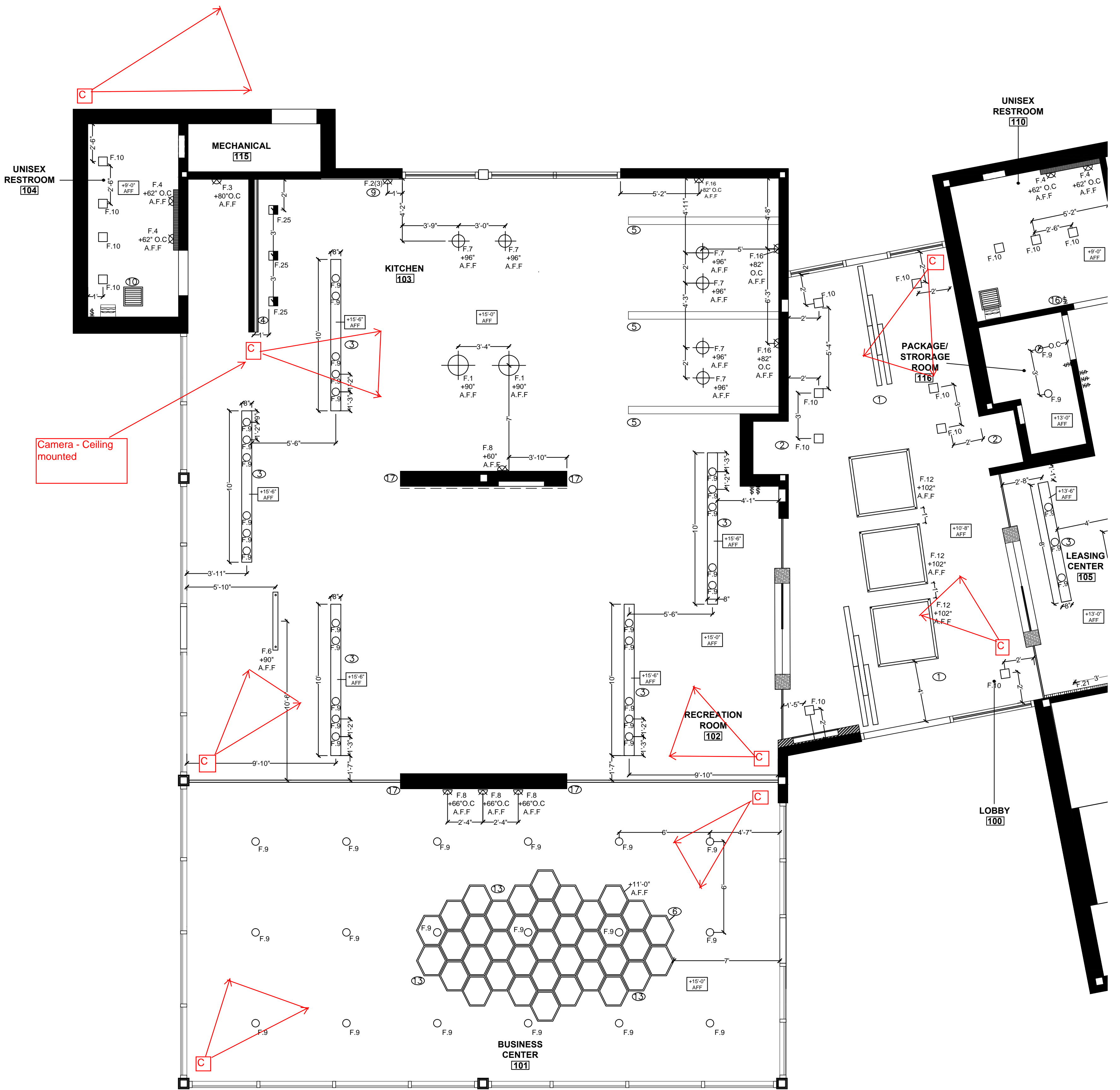
## GENERAL NOTE

- ALL SWITCHES TO HAVE WHITE DECORA SWITCHES AND SWITCH PLATES.
- SWITCHES SHALL BE MOUNTED WITHIN 8" OF DOOR JAMBS AT +42" AFF AND GANG PLATED WHERE APPLICABLE. UNLESS NOTED OTHERWISE. ALL MULTIPLE GROUPS OF SWITCHES, DIMMERS, ETC. SHALL BE HORIZONTALLY ALIGNED, GANGED, AND PROVIDED WITH A COMMON COVER PLATE. THERMOSTATS SHALL BE MOUNTED AT +42" AFF AND DIRECTLY ADJACENT TO SWITCHPLATE, UNLESS NOTED OTHERWISE.
- ALL LIGHT SWITCHES SHALL BE CIRCUITED AND INSTALLED TO COMPLY WITH APPLICABLE CODES AND ENERGY REQUIREMENTS.
- DESIGNER HAS SELECTED AND SPECIFIED LIGHT FIXTURES TO THE BEST HIS/HER ABILITY. ELECTRICAL CONTRACTOR AND ELECTRICAL WHOLESALER SHALL CHECK ALL LIGHTING SPECIFICATIONS AND NUMBERS BEFORE ORDERING. CONTRACTOR SHALL ALERT DESIGNER TO ANY DISCREPANCIES AND MAKE PROFESSIONAL RECOMMENDATIONS WHERE NECESSARY.
- ALL EXIT SIGNS SHALL COMPLY WITH APPLICABLE CODE REQUIREMENTS. REVIEW PLACEMENT OF EXIT SIGN WITH DESIGNER PRIOR TO INSTALLATION.
- ANY SUGGESTIONS FOR "OR EQUAL" SUBSTITUTIONS SHALL BE SUBMITTED, WITH CURRENT CUT SHEETS, BY CONTRACTOR FOR CONSIDERATION. POTENTIAL SUBSTITUTIONS SHALL BE REVIEWED AND APPROVED BY DESIGNER BEFORE ORDERING. POTENTIAL SUBSTITUTIONS SHALL BE SUBMITTED TO DESIGNER AT LEAST 2 WEEKS PRIOR TO THE "DROP DEAD" DATE FOR ORDERING.
- LIGHT FIXTURES SHALL BE INSTALLED EXACTLY AS NOTED. NO EXCEPTIONS.
- ALL WALL SCONCE LIGHT FIXTURES ARE TO BE MOUNTED AT +61" (+80") A.F.F. TO CENTER OF ELECTRICAL WALL BOX, UNLESS NOTED OTHERWISE.
- ALL PENDANT MOUNTING HEIGHTS TO BE A.F.F TO BOTTOM OF FIXTURE U.N.O.
- ALL WALL SCONCE LIGHT FIXTURE HEIGHTS TO BE ON CENTER OF FIXTURE U.N.O.
- NOTIFY IMT / INTERIOR DESIGNERS IF DISCREPANCIES EXIST BETWEEN ANY DRAWINGS.
- ALL SWITCH PLATES MOUNTED AT 40" A.F.F TO TOP OF PLATE U.N.O.

**NOTE(S):**  
 LOCATION OF HVAC UNITS, FRESH AIR DUCTS AND GRILLS, SUPPLY AIR DUCTS AND DIFFUSERS, ETC. ARE SUGGESTIONS ONLY. HVAC CONTRACTOR TO REVIEW PLANS AND CONFIRM WHETHER OR NOT ANY REVISIONS ARE REQUIRED TO THE LAYOUT. REVISIONS ARE TO BE DISCUSSED WITH IMT AND THE DESIGNER PRIOR TO INSTALLATION OF THE HVAC SYSTEM.

## KEY NOTES

- WOOD CEILING CONTINUED FROM EXTERIOR.
- OPENING FOR KIOSK @ 62" HT. SEE ID-7.2 ELEVATION "A".
- 6" DEEP RECESS FOR CAN LIGHTS. PAINT P.4
- 3" W X 10'-1" L X 3" D RECESS TO CONCEAL ROD (GALV. SECTOR TRACK WITH CARRIER) FOR CASCADE COIL DRAPERY. PAINT RECESS P.4.
- (3)STEEL COLUMNS L SHAPE 15'-0" HT X 10'-0" L (NOMINAL); PAINT P.3. VENDOR TO PROVIDE SHOP DRAWINGS FOR APPROVAL.
- SUSPENDED WOOD HEX COUTOUTS (SEE DESIGNER FOR DETAILS) MOUNTED @ 9'-8" AFF. SEE ID-7.1 ELEVATION "B" DETAIL "1"
- SOFFIT LINE.
- SWITCH CONTROLS "F.9" IN LEASING CENTER.
- 3 WALL MOUNTED LIGHT FIXTURES. SEE ID 7.2 ELEVATION "M" NORTH FOR INSTALL INSTRUCTIONS.
- EXHAUST FAN.
- SWITCH CONTROLS "F.14 AND F.20" IN LEASING CENTER.
- SUSPENDED WOOD PALLETS 6" FROM CEILING. INCLUDE BACKING AND ALL THREAD. SEE ID 7.2 ELEVATION "K" FOR DETAILS.
- INCLUDE BACKING AND ALL THREAD FOR SUSPENDED HEX PANEL. SEE ID-7.2 DETAIL "1" FOR SPECIFICATIONS.
- RECESSED LINEAR WALL LIGHT. SEE ID 7.2 ELEVATION "H" FOR INSTALL INSTRUCTIONS.
- 11'-0" W X 5' D X 6-1/2" H NICHE TO CONCEAL PROJECTION SCREEN HOUSING.
- SWITCH CONTROLS "F.18, F.21, AND F.23" IN LEASING CENTER.
- 10'-0" H CUSTOM MILLWORK/ WALL. SEE ID-7.8 DETAIL "4".
- METAL AND GYPSUM BOARD SOFFIT COVERED WITH CORRUGATED METAL. SEE ID-4.2C FOR SPECIFICATIONS.
- 6" DEEP RECESS TO CONCEAL MECCO SHADE HEADER.
- CEILING LINE.
- PENDANT CORD. SEE ID-7.5 ELEVATION "J" FOR DETAILS.
- TO SOFFIT.
- J BOX LOCATION.
- SEE ID-7.5 ELEVATION "J" FOR F.23 INSTALL DETAILS.
- THREE PENDANTS "F.22"; SEE ID-7.5 ELEVATION "K" FOR MOUNTING HEIGHTS



PROJECT:  
**IMT @ Riata**  
 5705 Diehl Trail  
 Austin, TX 78727

NO.	REVISIONS	DATE
1	REDLINE	6-19-14
2	CONSTRUCTION ISSUE SET	8-1-14
3	2ND REDLINE	10-6-14
4	CONSTRUCTION ADDENDUM #1	10-23-14

DRAWN BY:  
 VICTORIA ROGERS & JENIFER JANNIERE  
 SCALE:  
 1/4" = 1'-0"  
 SHEET TITLE:  
**LOBBY/BUSINESS CENTER/ & RECREATION ROOM REFLECTED CEILING PLAN**  
 SHEET NO.

**ID-3.1A**

# LIGHT FIXTURE SCHEDULE

TYPE	DESCRIPTION	MANUFACTURER	MODEL NUMBER	LAMP	CONTACT	REMARKS
F1	PENDANT	THE URBAN ELECTRIC CO.	"COSY" MA-1160HR	1-60W-S	--	FINISH: BLACK PEWTER, ACCENT FINISH: WHITE, GLASS: STANDARD CLEAR 6" SQ CANOPY. DIMS: 16" W X 23" H. MOUNT AT 90" A.F.F
F2	WALL SCONE	Y LIGHTING	"KODU" 3099/ 120 WALL	--	--	FINISH: CR CHROME. SEE ID-7.2 ELEVATION "M" NORTH FOR MOUNTING HEIGHTS. DIMS: 4.7" DIA X 2.2" EXT
F3	WALL SCONE	DEL REY	8" CYLINDER VERTICAL LAMP UP/ DOWNLIGHT	26 W QUAD TUBE	--	FINISH: BRUSHED METAL ANODIZED. CLEAR AZLAK HAZE REFLECTOR. DIMS: 8" DIA X 22" HT X 13" EXT. MOUNT AT 80" O.C A.F.F.
F4	WALL SCONE	LAMP PLUS	STRATUS COLLECTION #22847	60 WATT BULB	--	FINISH: BRUSHED STEEL. DIMS: 12 3/4" H X 8 1/2" W X 12" EXT X 5 1/4" BACKPLATE. MOUNT AT 62" O.C A.F.F.
F5	RECESSED LINEAR	PRUDENTIAL LIGHTING	BIONIC MODULAR 4" SYSTEM - STANDARD	--	--	ORDER DETAILS: FL5H-X-04-ABW-TMW-D1-X-X-X-X. FINISH: TEXTURED MATTE WHITE. FIXTURE TO BE FLUSH WITH CEILING.
F6	LINEAR PENDANT	TECH LIGHTING	CROSSROADS LINEAR SUSPENSION	LED	--	FINISH: 700LSCRS. DIMS: 46" L X 6" H W X 15.75" CANOPY X 144" ADJ CABLE. MOUNT AT 90" A.F.F TO BOTTOM OF FIXTURE.
F7	PENDANT	Y LIGHTING	DELANCY PENDANT	CFL 120 VOLT	--	SHADE COLOR: WHITE. CANOPY COLOR: SATIN NICKEL. ITEM CODE: TEC-2KD-700DDELP.
F8	WALL SCONE	EUREKA	STUBBY STACK 2038B	3000K LED	--	FINISH: CHROME STRUCTURE, WHITE DIFFUSER, WHITE BAFFLE. DIMS: 5" W X 6.5" H. MOUNT AT 66" O.C A.F.F. UNLESS NOTED OTHERWISE.
F9	RECESSED CAN	SOUTHLAND LIGHTING	SL-RT6CH	HIGH WATT	--	FINISH: ALUMINUM REFLECTOR. 6" DIA HIGH DENSITY CAN FOR 15'-0" CEILING
F10	RECESSED DOWNLIGHT	DELRAY LIGHTING	7" SQ OPEN TRIMLESS SINGLE LAMP DOWNLIGHT	--	--	FINISH: WHITE REFLECTOR. DIMS: 7" SQ.
F11	PENDANT	EUREKA	AVA PENDANT	32W CFL	--	FINISH: SHADE: WHITE POWDER COAT, DIFFUSER: WHITE ACRYLIC, CANOPY: WHITE. DIMS: 17.5" DIA X 12" H. MOUNT AT 72" A.F.F TO BOTTOM OF FIXTURE.
F12	PENDANT	DEL REY LIGHTING	STICK COMPLETA 2 SEAMLESS T5	C2FAX4H0 FLOURESCENT	--	FINISH: ALUMINUM BODY WITH FROSTED LENS. DIMS: 4'X4' SQ. MOUNT 102" A.F.F TO BOTTOM OF FIXTURE.
F13	CEILING MOUNT	LUMENS	ASHLAND FLUSH MOUNT LARGE	60 WATT	--	FINISH: POLISHED NICKEL. DIMS: 5.75" H X 16.25" DIA.
F14	LINEAR PENDANT	PRUDENTIAL LIGHTING	P40 LINEAR: P40-21-04-SAL-YPE-D1	--	--	FINISH: PEWTER. MOUNT AT 96" A.F.F TO BOTTOM OF FIXTURE.
F15	SURFACE DOWNLIGHT	EUREKA	FLOAT: 46640-1X1-CHR-CLR	--	--	FINISH: POLISHED CHROME, DIFFUSER: CLEAR. DIMS: 6.5" SQ X 8" H.
F16	WALL SCONE	SONNEMAN	4801.01 TRANSPARENC	A19 HALF CHROME BULB MED BASE	--	FINISH: POLISHED CHROME. DIMS: 7" W X 8" H. MOUNT AT 82" O.C A.F.F.
F17	CEILING MOUNT	SONNEMAN	4800.01 TRANSPARENC	A19 HALF CHROME BULB MED BASE	--	FINISH: POLISHED CHROME. DIMS: 7" W X 7" H X 6" EXT.
F18	WALL MOUNT	FINELITE	SERIES 17 ADA WM	T8	--	ORDER DETAILS: S17-VCF-PF-4-T8-SO-DO-W-X-OCO-X. FINISH: WHITE. DIMS: 4'-0" L X 4.7" HT X 3.95" EXT. MOUNT AT 84" A.F.F.
F19	PENDANT	EUREKA	RUBATO 4253	CFL	--	FINISH: CHROME, DIFFUSER: ACRYLIC TRANSLUCENT WHITE. DIMS: 16.5" DIA X 14.75" H X 120" CUSTOM CABLE LENGTH. MOUNT AT 84" A.F.F.
F20	PENDANT	TECH LIGHTING	SOCO - SINGLE PORT CANOPY	#300B4485 INCANDESCENT HALF CHROME	--	FINISH: CORD: ORANGE, SOCKET: MODERN SATIN NICKEL. CORD LENGTH 8'-0". MOUNT AT VARIOUS HEIGHTS. SEE ID-7.1 ELEVATION G.
F21	UPLIGHT	Y LIGHTING	CRICKET D60	F16 LED	--	FINISH: ANODIZED ALUMINUM WITH TEMPERED GLASS. MOUNT 6" AWAY FROM WALL.
F22	PENDANT	TECH LIGHTING	SOCO - SINGLE PORT CANOPY	#300B4485 INCANDESCENT HALF CHROME	--	FINISH: CORD: ORANGE, SOCKET: MODERN SATIN NICKEL. CORD LENGTH 8'-0". MOUNT AT VARIOUS HEIGHTS. SEE ID-7.2 ELEVATION "K" WEST.
F23	LINEAR WALL RECESSED	PRUDENTIAL LIGHTING	BIONIC MODULAR 4" SYSTEM - STANDARD	--	--	ORDER DETAILS: FL5H-X-04-ABW-TMW-D1-X-X-X-X. FINISH: TEXTURED WHITE. TO BE FLUSH WITH WALL.
F24	PENDANT	TECH LIGHTING	SOCO - SINGLE PORT CANOPY W/ SWAG HOOK	#300B4480 INCANDESCENT SQUIRREL CAGE	--	FINISH: CORD: WHITE, SOCKET: MODERN SATIN NICKEL. CORD LENGTH 96". MOUNT AT 8'-0" A.F.F./
F25	WALL WASHER	WAC LIGHTING	MODEL 136 ONE LIGHT GIMBAL	--	--	FINISH: WHITE INTERIOR, SQUARE TRIMLESS. DIMS: 8.2" SQ.

## LEGEND

SQUARE DOWNLIGHT	RECESSED STRIP LIGHT
DOWNLIGHT	LINEAR SUSPENSION
MINI PENDANT	EXIT SIGN. FILL INDICATES FACE(S)
WALL WASHER	LIGHT SWITCH
WALL SCONE	LIGHT SWITCH 3-WAY
PENDANT	LIGHT SWITCH DIMMER
FLUSH MOUNT	THERMOSTAT
FLUSH MOUNT	EXISTING TO REMAIN
FLUSH MOUNT	NEW
RECESSED WALL STRIP LIGHT	EXISTING TO BE REMOVED
	EXISTING REINSTALLED IN NEW LOCATION
	CEILING HEIGHT

## GENERAL NOTE

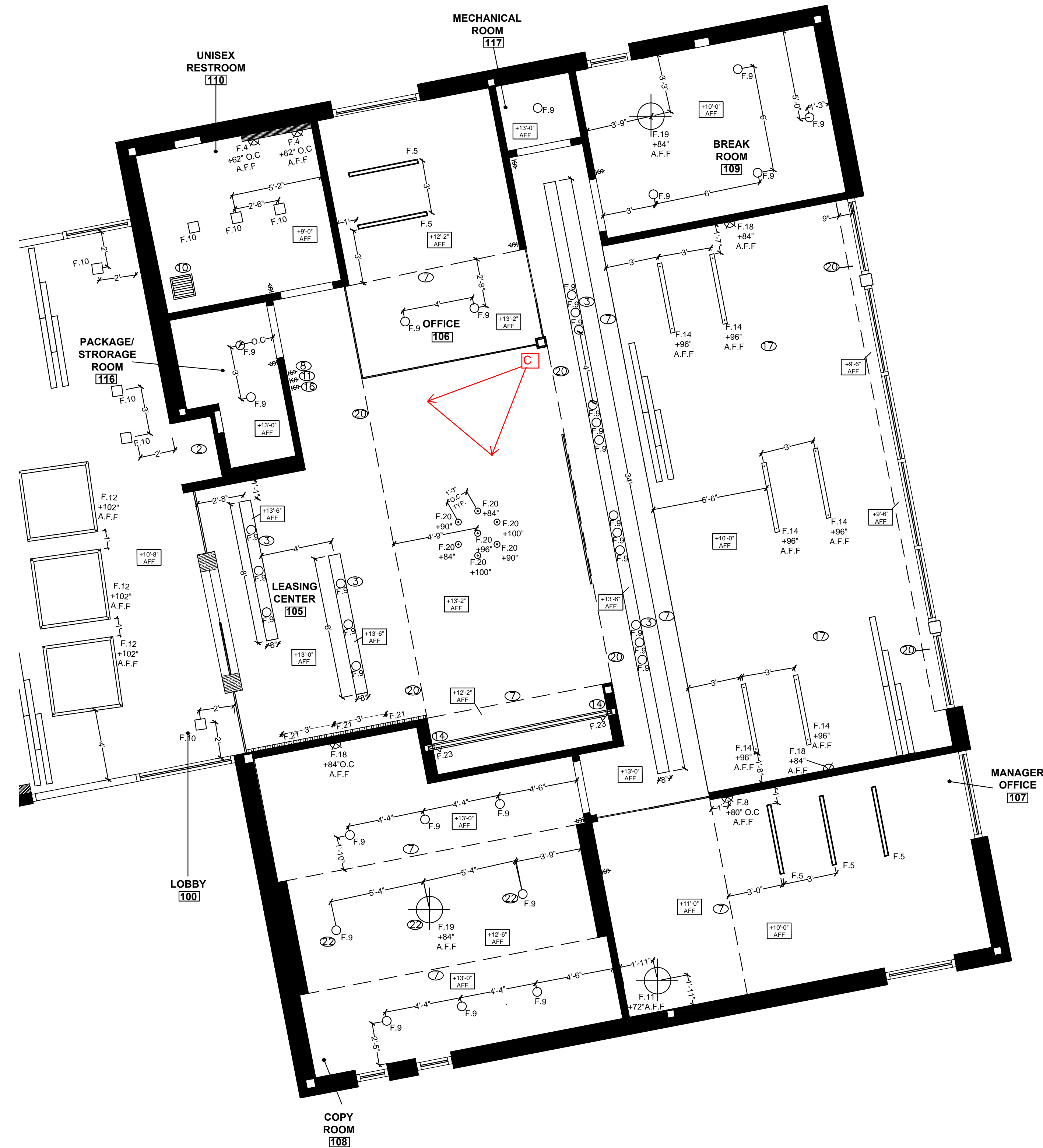
- ALL SWITCHES TO HAVE WHITE DECORA SWITCHES AND SWITCH PLATES.
- SWITCHES SHALL BE MOUNTED WITHIN 8" OF DOOR JAMBS AT +42" AFF AND GANG PLATED WHERE APPLICABLE, UNLESS NOTED OTHERWISE. ALL MULTIPLE GROUPS OF SWITCHES, DIMMERS, ETC. SHALL BE HORIZONTALLY ALIGNED, GANGED, AND PROVIDED WITH A COMMON COVER PLATE. THERMOSTATS SHALL BE MOUNTED AT +42" AFF AND DIRECTLY ADJACENT TO SWITCHPLATE, UNLESS NOTED OTHERWISE.
- ALL LIGHT SWITCHES SHALL BE CIRCUITED AND INSTALLED TO COMPLY WITH APPLICABLE CODES AND ENERGY REQUIREMENTS.
- DESIGNER HAS SELECTED AND SPECIFIED LIGHT FIXTURES TO THE BEST HIS/HER ABILITY. ELECTRICAL CONTRACTOR AND ELECTRICAL WHOLESALE SHALL CHECK ALL LIGHTING SPECIFICATIONS AND NUMBERS BEFORE ORDERING. CONTRACTOR SHALL ALERT DESIGNER TO ANY DISCREPANCIES AND MAKE PROFESSIONAL RECOMMENDATIONS WHERE NECESSARY.
- ALL EXIT SIGNS SHALL COMPLY WITH APPLICABLE CODE REQUIREMENTS. REVIEW PLACEMENT OF EXIT SIGN WITH DESIGNER PRIOR TO INSTALLATION.
- ANY SUGGESTIONS FOR "OR EQUAL" SUBSTITUTIONS SHALL BE SUBMITTED, WITH CURRENT CUT SHEETS, BY CONTRACTOR FOR CONSIDERATION. POTENTIAL SUBSTITUTIONS SHALL BE REVIEWED AND APPROVED BY DESIGNER BEFORE ORDERING. POTENTIAL SUBSTITUTIONS SHALL BE SUBMITTED TO DESIGNER AT LEAST 2 WEEKS PRIOR TO THE "DROP DEAD" DATE FOR ORDERING.
- LIGHT FIXTURES SHALL BE INSTALLED EXACTLY AS NOTED. NO EXCEPTIONS.
- ALL WALL SCONE LIGHT FIXTURES ARE TO BE MOUNTED AT +6'-8" (+80") A.F.F. TO CENTER OF ELECTRICAL WALL BOX, UNLESS NOTED OTHERWISE.
- ALL PENDANT MOUNTING HEIGHTS TO BE A.F.F TO BOTTOM OF FIXTURE U.N.O.
- ALL WALL SCONE LIGHT FIXTURE HEIGHTS TO BE ON CENTER OF FIXTURE U.N.O.
- NOTIFY IMT / INTERIOR DESIGNERS IF DISCREPANCIES EXIST BETWEEN ANY DRAWINGS.
- ALL SWITCH PLATES MOUNTED AT 40" A.F.F TO TOP OF PLATE U.N.O.

## NOTE(S):

LOCATION OF HVAC UNITS, FRESH AIR DUCTS AND GRILLS, SUPPLY AIR DUCTS AND DIFFUSERS, ETC. ARE SUGGESTIONS ONLY. HVAC CONTRACTOR TO REVIEW PLANS AND CONFIRM WHETHER OR NOT ANY REVISIONS ARE REQUIRED TO THE LAYOUT. REVISIONS ARE TO BE DISCUSSED WITH IMT AND THE DESIGNER PRIOR TO INSTALLATION OF THE HVAC SYSTEM.

## KEY NOTES

- WOOD CEILING CONTINUED FROM EXTERIOR.
- OPENING FOR KIOSK @ 62" HT. SEE ID-7.2 ELEVATION "A".
- 6" DEEP RECESS FOR CAN LIGHTS. PAINT P.4
- 3" W X 10'-11" L X 3"D RECESS TO CONCEAL ROD (GALV. SECTOR TRACK WITH CARRIER) FOR CASCADE COIL DRAPERY. PAINT RECESS P.4.
- (3) STEEL COLUMNS L SHAPE 15'-0" HT X 10'-0" L (NOMINAL); PAINT P.3. VENDOR TO PROVIDE SHOP DRAWINGS FOR APPROVAL.
- SUSPENDED WOOD HEX CUTOUTS (SEE DESIGNER FOR DETAILS) MOUNTED @ 9'-8" AFF. SEE ID-7.1 ELEVATION "B" DETAIL "1".
- SOFFIT LINE.
- SWITCH CONTROLS "F.9" IN LEASING CENTER.
- 3 WALL MOUNTED LIGHT FIXTURES. SEE ID 7.2 ELEVATION "M" NORTH FOR INSTALL INSTRUCTIONS.
- EXHAUST FAN.
- SWITCH CONTROLS "F.14 AND F.20" IN LEASING CENTER.
- SUSPENDED WOOD PALLETS 6" FROM CEILING. INCLUDE BACKING AND ALL THREAD. SEE ID 7.2 ELEVATION "K" FOR DETAILS.
- INCLUDE BACKING AND ALL THREAD FOR SUSPENDED HEX PANEL. SEE ID-7.2 DETAIL "1" FOR SPECIFICATIONS.
- RECESSED LINEAR WALL LIGHT. SEE ID 7.2 ELEVATION "H" FOR INSTALL INSTRUCTIONS.
- 11'-0" W X 5' D X 6'-1/2" H NICHE TO CONCEAL PROJECTION SCREEN HOUSING.
- SWITCH CONTROLS "F.18, F.21, AND F.23" IN LEASING CENTER.
- 10'-0" H CUSTOM MILLWORK/ WALL. SEE ID-7.8 DETAIL "4".
- METAL AND GYPSUM BOARD SOFFIT COVERED WITH CORRUGATED METAL. SEE ID-4.2C FOR SPECIFICATIONS.
- 6" DEEP RECESS TO CONCEAL MECCO SHADE HEADER.
- CEILING LINE.
- PENDANT CORD. SEE ID-7.5 ELEVATION "J" FOR DETAILS.
- TO SOFFIT.
- J BOX LOCATION.
- SEE ID-7.5 ELEVATION "J" FOR F.23 INSTALL DETAILS.
- THREE PENDANTS "F.22". SEE ID-7.5 ELEVATION "K" FOR MOUNTING HEIGHTS



**imt**  
RESIDENTIAL

PROJECT:

**IMT @ Riata**

5705 Diehl Trail  
Austin, TX 78727

NO.	REVISIONS	DATE
1	REDLINE	6-19-14
2	CONSTRUCTION ISSUE SET	8-1-14
3	2ND REDLINE	10-6-14
4	CONSTRUCTION ADDENDUM #1	10-23-14

DRAWN BY:  
VICTORIA ROGERS & JENIFER JANNIRE  
SCALE:  
1/4" = 1'-0"  
SHEET TITLE:

**LEASING CENTER  
REFLECTED CEILING  
PLAN**

SHEET NO.

**ID-3.1B**

# LIGHT FIXTURE SCHEDULE

TYPE	DESCRIPTION	MANUFACTURER	MODEL NUMBER	LAMP	CONTACT	REMARKS
F1	PENDANT	THE URBAN ELECTRIC CO.	*COSY MA-1160HR	1-60W-S	--	FINISH: BLACK PEWTER, ACCENT FINISH: WHITE, GLASS: STANDARD CLEAR 6" SQ CANOPY, DIMS: 16" W X 23" H, MOUNT AT 90" A.F.F.
F2	WALL SCONE	Y LIGHTING	*KODO 3099/ 120 WALL	--	--	FINISH: CR CHROME. SEE ID-7.2 ELEVATION "M" NORTH FOR MOUNTING HEIGHTS. DIMS: 4.7" DIA X 2.2" EXT.
F3	WALL SCONE	DEL REY	8" CYLINDER VERTICAL LAMP UP/ DOWNLIGHT	28 W QUAD TUBE	--	FINISH: BRUSHED METAL ANODIZED. CLEAR AZLAK HAZE REFLECTOR. DIMS: 8" DIA X 22" HT X 13" EXT. MOUNT AT 80" O.C A.F.F.
F4	WALL SCONE	LAMP PLUS	STRATUS COLLECTION #22647	60 WATT BULB	--	FINISH: BRUSHED STEEL. DIMS: 12 3/4" H X 8 3/8" W X 12" EXT X 5 3/4" BACKPLATE. MOUNT AT 62" O.C A.F.F.
F5	RECESSED LINEAR	PRUDENTIAL LIGHTING	BIONIC MODULAR 4" SYSTEM - STANDARD	--	--	ORDER DETAILS: FL5H-X-04-ABW-TMW-D1-X-X-X-X. FINISH: TEXTURED MATTE WHITE. FIXTURE TO BE FLUSH WITH CEILING.
F6	LINEAR PENDANT	TECH LIGHTING	CROSSROADS LINEAR SUSPENSION	LED	--	FINISH: 700LSRS. DIMS: 46" L X 6" H W X 15.75" CANOPY X 144" ADJ CABLE. MOUNT AT 90" A.F.F TO BOTTOM OF FIXTURE.
F7	PENDANT	Y LIGHTING	DELANCY PENDANT	CFL 120 VOLT	--	SHADE COLOR: WHITE. CANOPY COLOR: SATIN NICKEL. ITEM CODE: TEC-2KD-700TDELP.
F8	WALL SCONE	EUREKA	STUBBY STACK 2038B	3000K LED	--	FINISH: CHROME STRUCTURE, WHITE DIFFUSER, WHITE BAFFLE. DIMS: 5"W X 6.5" H. MOUNT AT 66" O.C A.F.F. UNLESS NOTED OTHERWISE.
F9	RECESSED CAN	SOUTHLAND LIGHTING	SL-R76CH	HIGH WATT	DANIEL MAZEWSKI 818-965-8900	FINISH: ALUMINUM REFLECTOR. 6" DIA HIGH DENSITY CAN FOR 15"-0" CEILING
F10	RECESSED DOWNLIGHT	DELRAY LIGHTING	7" SQ OPEN TRIMLESS SINGLE LAMP DOWNLIGHT	--	--	FINISH: WHITE REFLECTOR. DIMS: 7" SQ.
F11	PENDANT	EUREKA	AVA PENDANT	32W CFL	--	FINISH: SHADE: WHITE POWDER COAT, DIFFUSER: WHITE ACRYLIC, CANOPY: WHITE. DIMS: 17.5" DIA X 12" H. MOUNT AT 72" A.F.F TO BOTTOM OF FIXTURE.
F12	PENDANT	DEL REY LIGHTING	STICK COMPLETE 2 SEAMLESS T5	C2F4X4HO FLOURESCENT	--	FINISH: ALUMINUM BODY WITH FROSTED LENS. DIMS: 4'X4" SQ. MOUNT 102" A.F.F TO BOTTOM OF FIXTURE.
F13	CEILING MOUNT	LUMENS	ASHLAND FLUSH MOUNT LARGE	60 WATT	--	FINISH: POLISHED NICKEL. DIMS: 5.75" H X 16.25" DIA.
F14	LINEAR PENDANT	PRUDENTIAL LIGHTING	P40 LINEAR: P40-2T-04-SAL-YPE-D1	--	--	FINISH: PEWTER. MOUNT AT 96" A.F.F TO BOTTOM OF FIXTURE.
F15	SURFACE DOWNLIGHT	EUREKA	FLOAT: 46640-1X1-CHR-CLR	--	--	FINISH: POLISHED CHROME, DIFFUSER: CLEAR. DIMS: 6.5" SQ X 8" H.
F16	WALL SCONE	SONNEMAN	4801.01 TRASPARENCE	A19 HALF CHROME BULB MED BASE	--	FINISH: POLISHED CHROME. DIMS: 7"W X 8"H. MOUNT AT 82" O.C A.F.F.
F17	CEILING MOUNT	SONNEMAN	4800.01 TRASPARENCE	A19 HALF CHROME BULB MED BASE	--	FINISH: POLISHED CHROME. DIMS: 7" W X 7" H X 6" EXT.
F18	WALL MOUNT	FINELITE	SERIES 17 ADA WM	T8	--	ORDER DETAILS: S17-VCF-PF-4-T8-SC-00-DDW-X-OCO-X. FINISH: WHITE. DIMS: 4'-0"L X 4.7" HT X 3.95" EXT. MOUNT AT 84" A.F.F.
F19	PENDANT	EUREKA	RUBATO 4253	CFL	--	FINISH: CHROME, DIFFUSER: ACRYLIC TRANSLUCENT WHITE. DIMS: 16.5" DIA X 14.75" H X 120" CUSTOM CABLE LENGTH. MOUNT AT 84" A.F.F.
F20	PENDANT	TECH LIGHTING	SOCO - SINGLE PORT CANOPY	#300BH485 INCANDESCENT HALF CHROME	--	FINISH: CORD: ORANGE, SOCKET: MODERN SATIN NICKEL. CORD LENGTH 8'-0". MOUNT AT VARIOUS HEIGHTS. SEE ID-7.1 ELEVATION G.
F21	UPLIGHT	Y LIGHTING	CRICKET D60	F16 LED	--	FINISH: ANODIZED ALUMINUM WITH TEMPERED GLASS. MOUNT 6" AWAY FROM WALL.
F22	PENDANT	TECH LIGHTING	SOCO - SINGLE PORT CANOPY	#300BH485 INCANDESCENT HALF CHROME	--	FINISH: CORD: ORANGE, SOCKET: MODERN SATIN NICKEL. CORD LENGHT 8'-0". MOUNT AT VARIOUS HEIGHTS. SEE ID-7.2 ELEVATION "K" WEST.
F23	LINEAR WALL RECESSED	PRUDENTIAL LIGHTING	BIONIC MODULAR 4" SYSTEM - STANDARD	--	--	ORDER DETAILS: FL5H-X-04-ABW-TMW-D1-X-X-X-X. FINISH: TEXTURED WHITE. TO BE FLUSH WITH WALL.
F24	PENDANT	TECH LIGHTING	SOCO - SINGLE PORT CANOPY W/ SWAG HOOK	#300BH480 INCANDESCENT SQUIRREL CAGE	--	FINISH: CORD: WHITE, SOCKET: MODERN SATIN NICKEL. CORD LENGHT 96". MOUNT AT 8'-0" A.F.F./
F25	WALL WASHER	WAC LIGHTING	MODEL 136 ONE LIGHT GIMBAL	--	--	FINISH: WHITE INTERIOR. SQUARE TRIMLESS. DIMS: 8.2" SQ.
F26	CEILING MOUNT	SOUTHLAND LIGHTING	CL232	2-F32T8	DANIEL MAZEWSKI 818-965-8900	52" x 11" x 6". FINISH: WHITE , GLASS: OPAL ACRYLIC.
F27	RECESSED CAN	LIGHTOLOGY	BRC186495	LED	--	3.6" W X 2.6" D. FINISH: MATTE CHROME.

## LEGEND

SQUARE DOWNLIGHT	RECESSED STRIP LIGHT
DOWNLIGHT	LINEAR SUSPENSION
MINI PENDANT	EXIT SIGN. FILL INDICATES FACE(S)
WALL WASHER	LIGHT SWITCH
WALL SCONE	LIGHT SWITCH 3-WAY
PENDANT	LIGHT SWITCH DIMMER
FLUSH MOUNT	THERMOSTAT
FLUSH MOUNT	EXISTING TO REMAIN
FLUSH MOUNT	NEW
RECESSED WALL STRIP LIGHT	EXISTING TO BE REMOVED
	EXISTING REINSTALLED IN NEW LOCATION
	+10'-0" AFF CEILING HEIGHT

## GENERAL NOTE

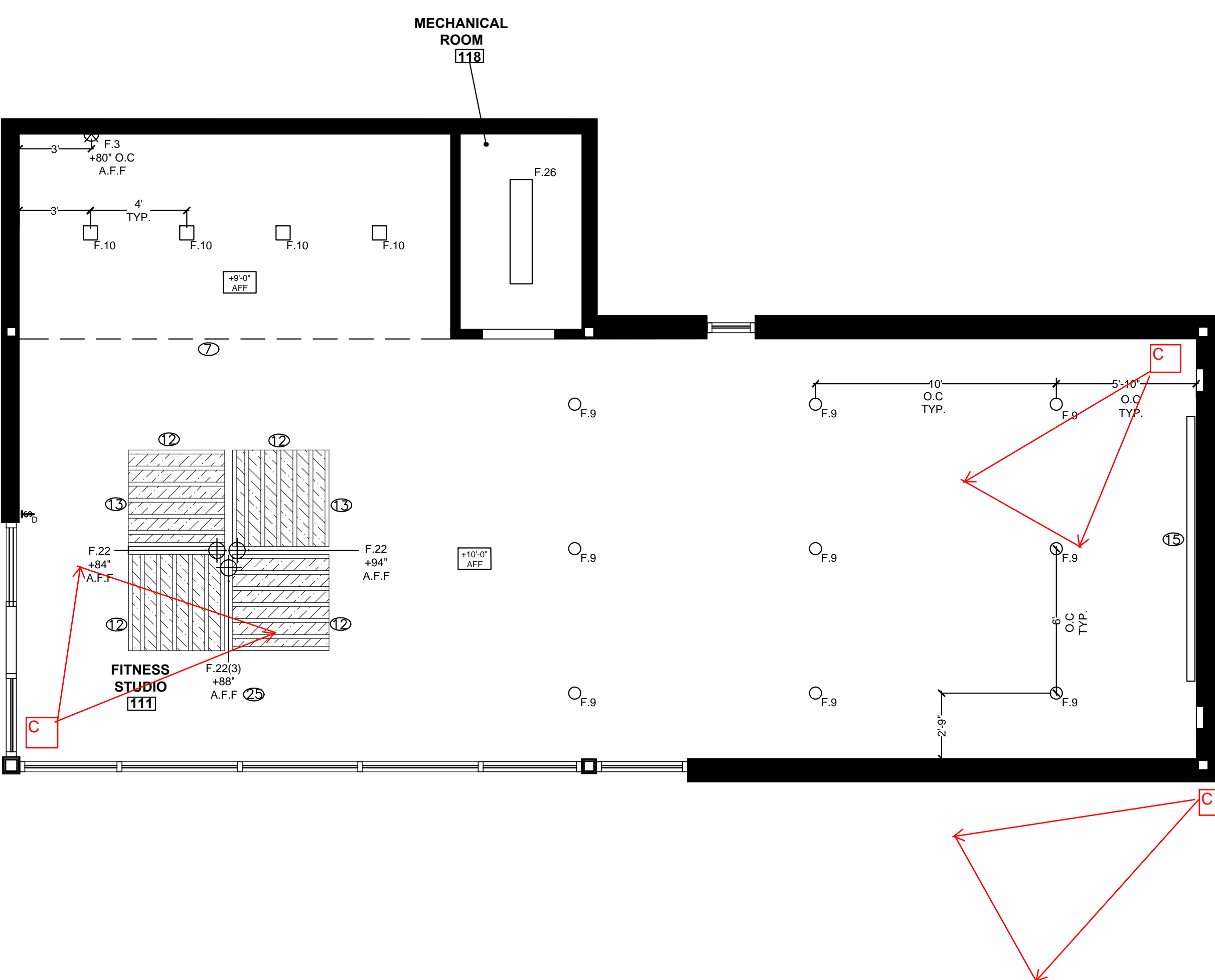
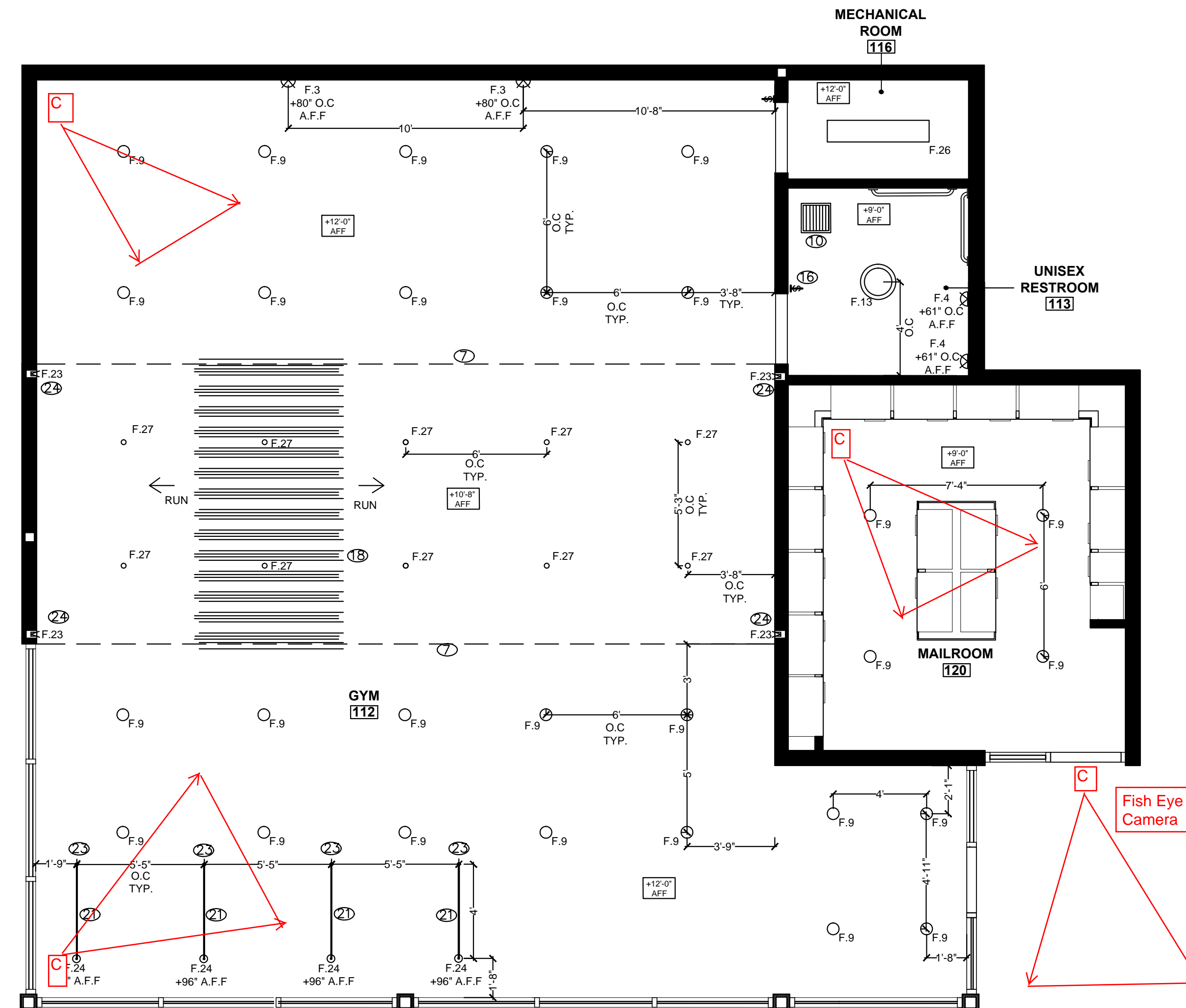
- ALL SWITCHES TO HAVE WHITE DECORA SWITCHES AND SWITCH PLATES.
- SWITCHES SHALL BE MOUNTED WITHIN 8" OF DOOR JAMBS AT +42" AFF AND GANG PLATED WHERE APPLICABLE, UNLESS NOTED OTHERWISE. ALL MULTIPLE GROUPS OF SWITCHES, DIMMERS, ETCO SHALL BE HORIZONTALLY ALIGNED, GANGED, AND PROVIDED WITH A COMMON COVER PLATE. THERMOSTATS SHALL BE MOUNTED AT +42" AFF AND DIRECTLY ADJACENT TO SWITCH/PLATE, UNLESS NOTED OTHERWISE.
- ALL LIGHT SWITCHES SHALL BE CIRCUITED AND INSTALLED TO COMPLY WITH APPLICABLE CODES AND ENERGY REQUIREMENTS.
- DESIGNER HAS SELECTED AND SPECIFIED LIGHT FIXTURES TO THE BEST HIS/HER ABILITY. ELECTRICAL CONTRACTOR AND ELECTRICAL WHOLESALER SHALL CHECK ALL LIGHTING SPECIFICATIONS AND NUMBERS BEFORE ORDERING. CONTRACTOR SHALL ALERT DESIGNER TO ANY DISCREPANCIES AND MAKE PROFESSIONAL RECOMMENDATIONS WHERE NECESSARY.
- ALL EXIT SIGNS SHALL COMPLY WITH APPLICABLE CODE REQUIREMENTS. REVIEW PLACEMENT OF EXIT SIGN WITH DESIGNER PRIOR TO INSTALLATION.
- ANY SUGGESTIONS FOR "OR EQUAL" SUBSTITUTIONS SHALL BE SUBMITTED, WITH CURRENT CUT SHEETS, BY CONTRACTOR FOR CONSIDERATION. POTENTIAL SUBSTITUTIONS SHALL BE REVIEWED AND APPROVED BY DESIGNER BEFORE ORDERING. POTENTIAL SUBSTITUTIONS SHALL BE SUBMITTED TO DESIGNER AT LEAST 2 WEEKS PRIOR TO THE "DROP DEAD" DATE FOR ORDERING.
- LIGHT FIXTURES SHALL BE INSTALLED EXACTLY AS NOTED. NO EXCEPTIONS.
- ALL WALL SCONE LIGHT FIXTURES ARE TO BE MOUNTED AT +6'-8" (+80") A.F.F. TO CENTER OF ELECTRICAL WALL BOX, UNLESS NOTED OTHERWISE.
- ALL PENDANT MOUNTING HEIGHTS TO BE A.F.F TO BOTTOM OF FIXTURE U.N.O.
- ALL WALL SCONE LIGHT FIXTURE HEIGHTS TO BE ON CENTER OF FIXTURE U.N.O.
- NOTIFY IMT / INTERIOR DESIGNERS IF DISCREPANCIES EXIST BETWEEN ANY DRAWINGS.
- ALL SWITCH PLATES MOUNTED AT 40" A.F.F TO TOP OF PLATE U.N.O.

## NOTE(S):

LOCATION OF HVAC UNITS, FRESH AIR DUCTS AND GRILLS, SUPPLY AIR DUCTS AND DIFFUSERS, ETC. ARE SUGGESTIONS ONLY. HVAC CONTRACTOR TO REVIEW PLANS AND CONFIRM WHETHER OR NOT ANY REVISIONS ARE REQUIRED TO THE LAYOUT. REVISIONS ARE TO BE DISCUSSED WITH IMT AND THE DESIGNER PRIOR TO INSTALLATION OF THE HVAC SYSTEM.

## KEY NOTES

- WOOD CEILING CONTINUED FROM EXTERIOR.
- OPENING FOR KIOSK @ 62" HT. SEE ID-7.2 ELEVATION 'A'.
- 6" DEEP RECESS FOR CAN LIGHTS. PAINT P.4
- 3"W X 10'-1" L X 3"D RECESS TO CONCEAL ROD (GALV. SECTOR TRACK WITH CARRIER) FOR CASCADE COIL DRAPERY. PAINT RECESS P.4.
- (3)STEEL COLUMNS L SHAPE 15'-0" HT X 10'-0" L (NOMINAL); PAINT P.3. VENDOR TO PROVIDE SHOP DRAWINGS FOR APPROVAL.
- SUSPENDED WOOD HEX CUTOUTS (SEE DESIGNER FOR DETAILS) MOUNTED @ 9'-8" AFF. SEE ID-7.1 ELEVATION 'B' DETAIL '1'.
- SOFFIT LINE.
- SWITCH CONTROLS "F.9" IN LEASING CENTER.
- 3 WALL MOUNTED LIGHT FIXTURES. SEE ID 7.2 ELEVATION "M" NORTH FOR INSTALL INSTRUCTIONS.
- EXHAUST FAN.
- SWITCH CONTROLS "F.14 AND F.20" IN LEASING CENTER.
- SUSPENDED WOOD PALLETS 6" FROM CEILING. INCLUDE BACKING AND ALL THREAD. SEE ID 7.2 ELEVATION "K" FOR DETAILS.
- INCLUDE BACKING AND ALL THREAD FOR SUSPENDED HEX PANEL. SEE ID-7.2 DETAIL "1" FOR SPECIFICATIONS.
- RECESSED LINEAR WALL LIGHT. SEE ID 7.2 ELEVATION "H" FOR INSTALL INSTRUCTIONS.
- 11'-0" W X 5" D X 6'-1/2" H NICHE TO CONCEAL PROJECTION SCREEN HOUSING.
- SWITCH CONTROLS "F.18, F.21, AND F.23" IN LEASING CENTER.
- 10'-0" H CUSTOM MILLWORK/ WALL. SEE ID-7.8 DETAIL "4".
- METAL AND GYPSUM BOARD SOFFIT COVERED WITH CORRUGATED METAL. SEE ID-4.2C FOR SPECIFICATIONS.
- 6" DEEP RECESS TO CONCEAL MECCO SHADE HEADER.
- CEILING LINE.
- PENDANT CORD. SEE ID-7.5 ELEVATION "J" FOR DETAILS.
- Q TO SOFFIT.
- J BOX LOCATION.
- SEE ID-7.5 ELEVATION "J" FOR F.23 INSTALL DETAILS.
- THREE PENDANTS "F.22". SEE ID-7.5 ELEVATION "K" FOR MOUNTING HEIGHTS



**imt**  
RESIDENTIAL

PROJECT:

**IMT @ Riata**

5705 Diehl Trail  
Austin, TX 78727

NO.	REVISIONS	DATE
1	REDLINE	6-19-14
2	CONSTRUCTION ISSUE SET	8-1-14
3	2ND REDLINE	10-6-14
4	CONSTRUCTION ADDENDUM #1	10-23-14

DRAWN BY:  
VICTORIA ROGERS & JENIFER JANNIRE  
SCALE:  
1/4" = 1'-0"  
SHEET TITLE:

**GYM & FITNESS STUDIO  
REFLECTED CEILING  
PLAN**

SHEET NO.  
**ID-3.1C**