

Presented By:

Bob Coffman
Commercial Fitness Systems, Inc.
713-520-8119
bobcoffman@comcast.net

SCALE: 1/8" = 1'

06/01/15

Approx SF: 1,253

REV: 1.5

PROJECT NO.:
CMF101426

LEGEND

CARDIO

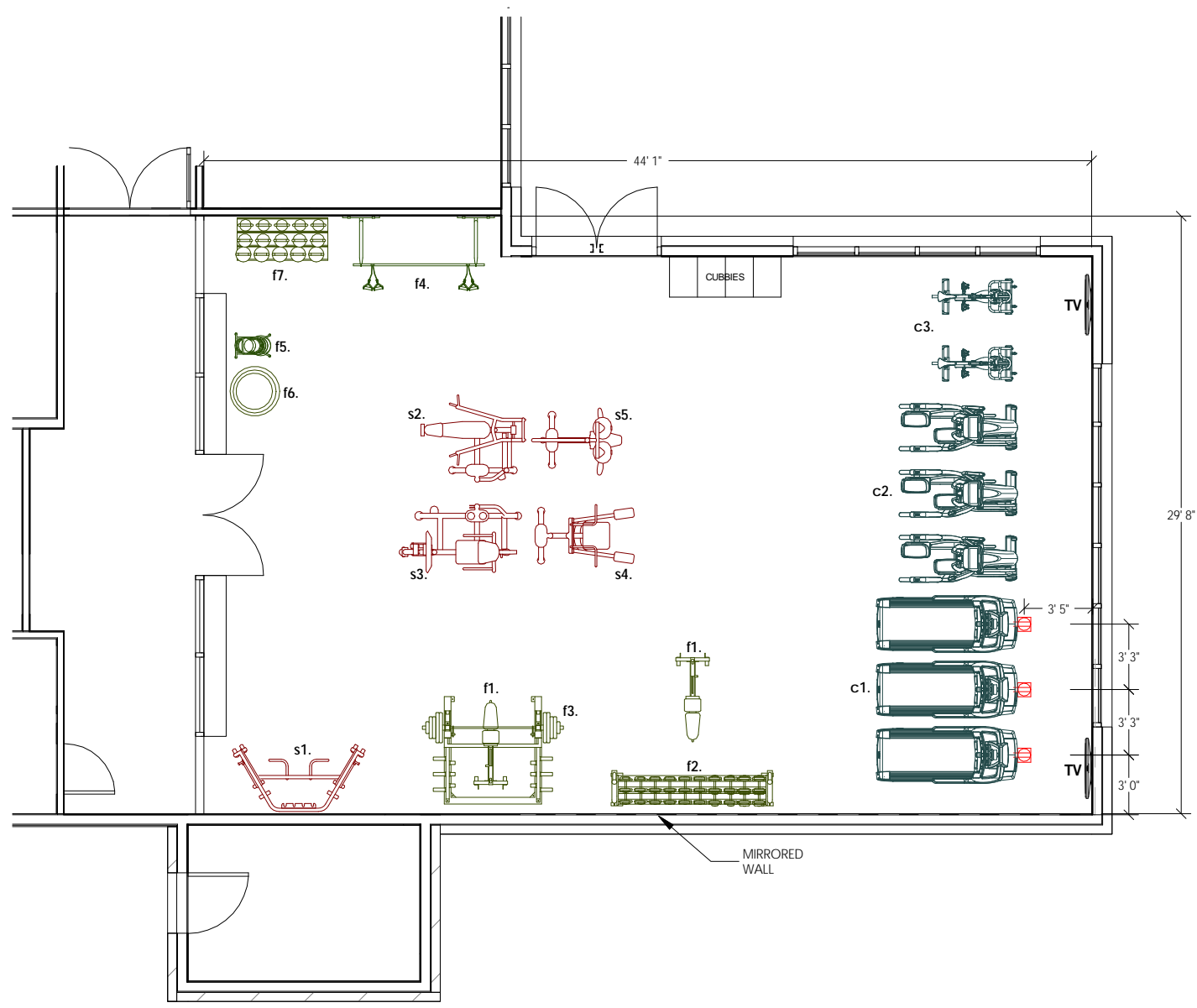
- c1. MATRIX TREADMILL
- c2. MATRIX ELLIPTICAL
- c3. MATRIX SPIN BIKE

STRENGTH

- s1. MATRIX FUNCTIONAL TRAINER
- s2. MATRIX MULTI PRESS
- s3. MATRIX LEG PRESS / CALF
- s4. MATRIX ASSISTED DIP / CHIN
- s5. MATRIX PEC FLY / REAR DELT

FREE WEIGHTS / FUNCTIONAL

- f1. MATRIX MULTI ADJ. DB BENCH
- f2. MATRIX 10 PAIR DB RACK
- f3. MATRIX SMITH
- f4. TRX MULTI MOUNT
- f5. MED BALL STAND
- f6. FITNESS BALL STACK
- f7. KETTLEBELL RACK



110VAC 20AMP 60 HERTZ NEMA 5-20R
 220VAC 20AMP 60 HERTZ NEMA 6-20R
 110 VAC 50-60 HERTZ
 Coaxial RF TV output, 75 ohm
 RJ45 Ethernet Lan, CAT6

EACH TREADMILL REQUIRES ITS OWN INDIVIDUAL BRANCH CIRCUIT WITH THE HOT, NEUTRAL AND GROUND WIRES RUN TO THE ELECTRICAL PANEL

FOR ADDITIONAL REQUIREMENTS PLEASE REFERENCE THE MANF. SPECIFICATIONS SHEET RECOMMENDED CEILING HEIGHT ABOVE THE TREADMILL AND ELLIPTICAL IS 90"

THIS FLOOR PLAN IS PROVIDED FOR GENERAL VISUAL REFERENCE ONLY. M5 DESIGN INC. MAKES NO REPRESENTATION OR WARRANTY THAT THE FLOOR PLAN COMPLIES WITH ANY APPLICABLE LAW, RULE OR REGULATION OR ANY INDUSTRY OR SAFETY STANDARD OR REQUIREMENT. IT IS THE OWNERS SOLE RESPONSIBILITY TO INSURE THAT THE PLACEMENT OF EQUIPMENT, FURNITURE AND ASSOCIATED ITEMS IS SAFE AND COMPLIES WITH ALL APPLICABLE LAWS, RULES, REGULATIONS AND STANDARDS, AND M5 DESIGN INC. DISCLAIMS ALL RESPONSIBILITY WITH RESPECT THERETO.