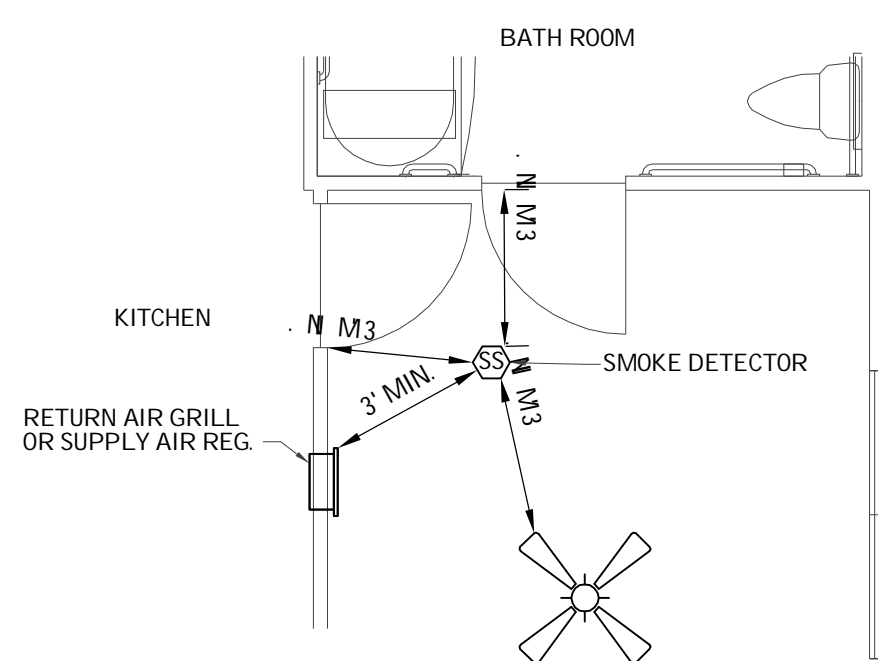
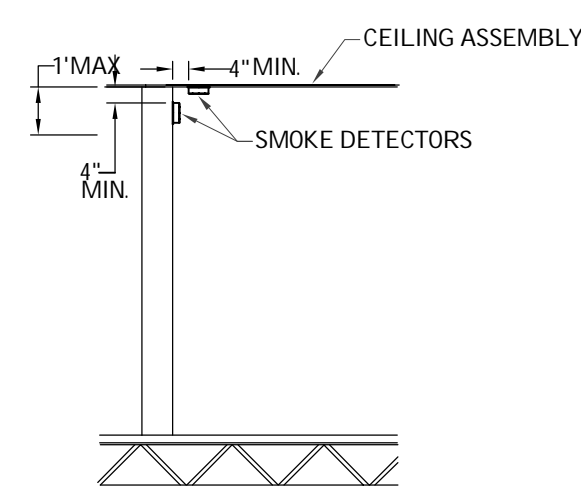


**SMOKE DETECTOR  
VAULTED OR  
PEAKED CEILING**  
N.T.S.

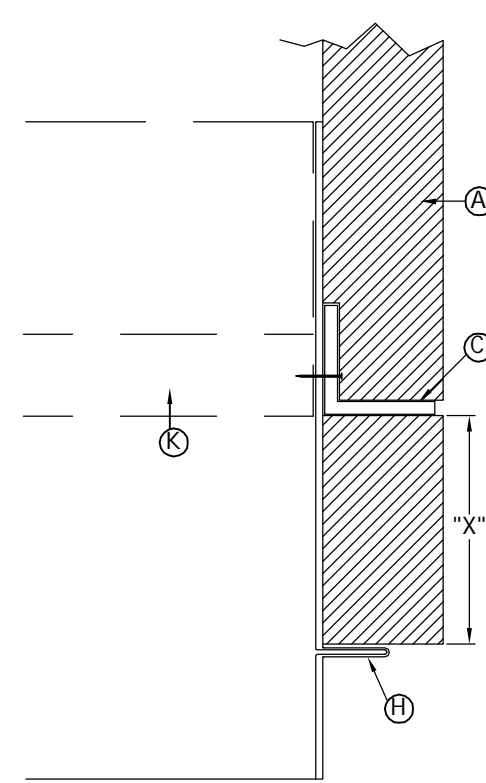


**SMOKE DETECTOR  
CLEARANCES**  
N.T.S.

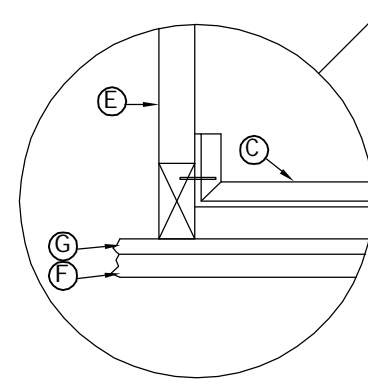


**SMOKE DETECTORS  
WALL & CEILING  
MOUNTED LOCATIONS**  
N.T.S.

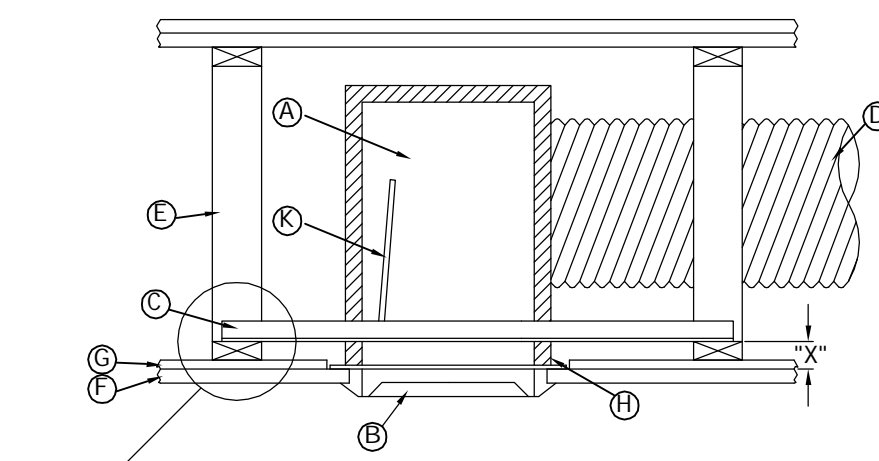
- Ⓐ FIBERGLASS DUCTBOARD PLENUM
- Ⓑ STEEL FRAME GRILLE/DIFFUSER, 26 GA. (0.55) MINIMUM SEE NOTE 5.
- Ⓒ 3/4" x 3/4" x 1/8" GA. (19 x 19 x 1.61) SUPPORTED ANGLE (2 SIDES), SEE NOTES 1 & 2
- Ⓓ FLEX DUCT UL CLASSIFIED AIR DUCT (CLASS 0 OR 1)
- Ⓔ WOOD TRUSS (REFER TO SPECIFIC UL DESIGN NO.)
- Ⓕ 5/8" (16) GYPSUM WALLBOARD (REFER TO SPECIFIC UL DESIGN NO.)
- Ⓖ RC CHANNEL
- Ⓗ SUB-FRAME WITH PLASTER FLANGE
- Ⓘ 1" x 1" x 22GA. (25 x 25 x .85) RETAINING ANGLE (MIN) ON ALL 4 SIDES
- Ⓛ AIR DUCT
- Ⓚ CEILING DAMPER



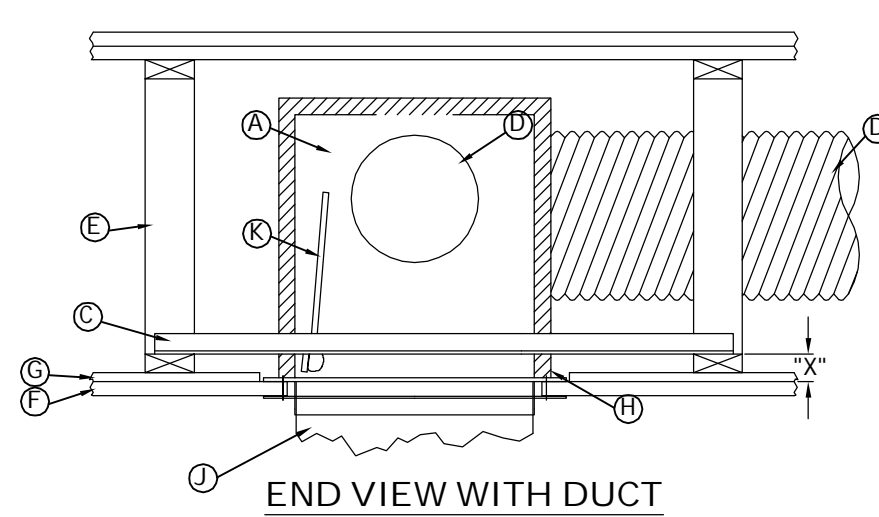
**DETAIL A**  
N.T.S.



**DETAIL B**  
N.T.S.



**END VIEW WITH GRILLE**  
N.T.S.



**END VIEW WITH DUCT**  
N.T.S.

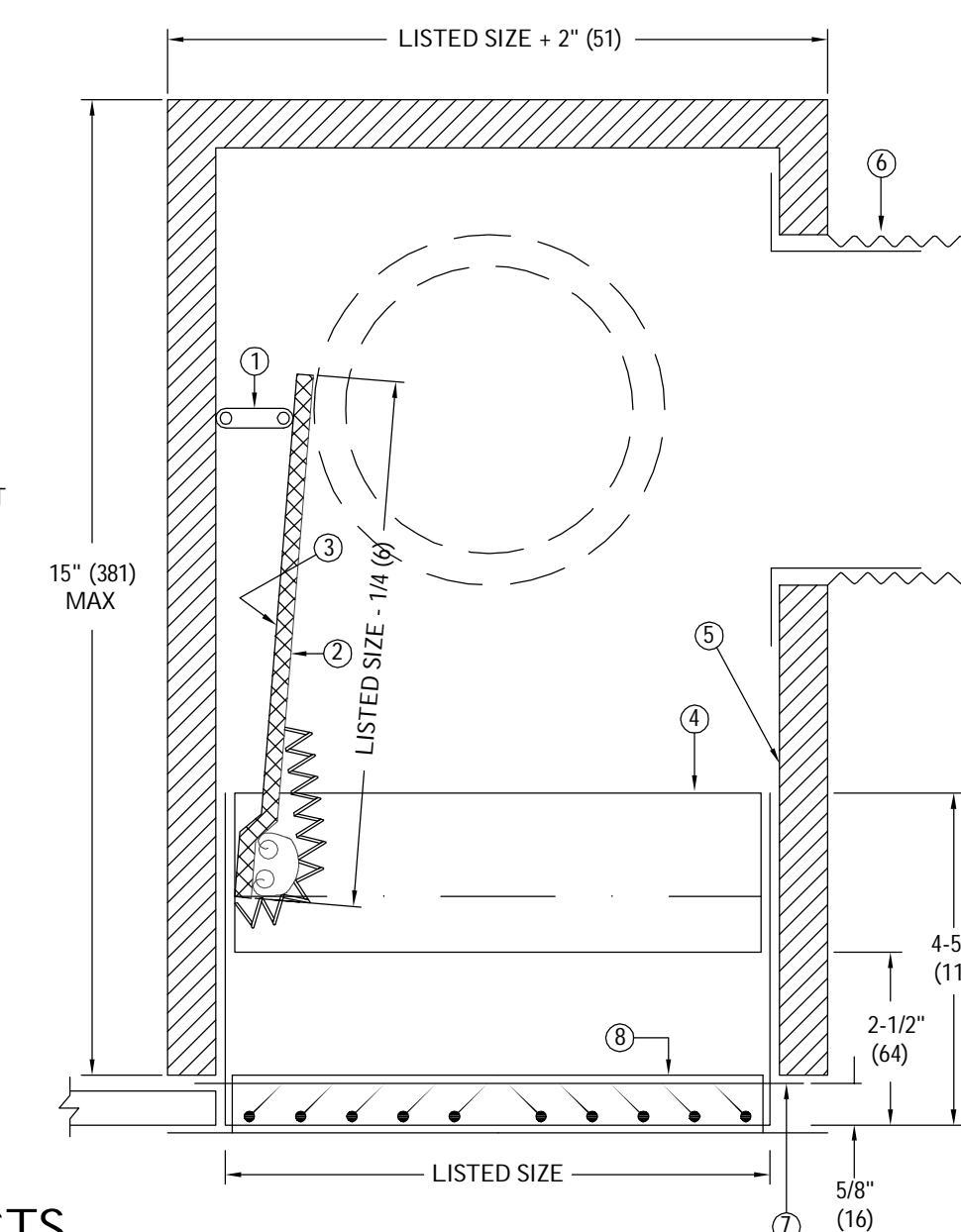
**CONSTRUCTION:**

1. UL LISTED FUSIBLE LINK, 212°F (100°C) STANDARD.
2. BLADES: 22 GA. (0.85) G60 ROLL-FORMED GALVANIZED STEEL.
3. BLADE INSULATION: NON-ASBESTOS UL CLASSIFIED.
4. DAMPER FRAME: 22 GA. (0.85) G60 GALV. STEEL.
5. FIBERGLASS PLENUM (BY MAP OR OTHERS): 1" (25) THICK FIBERGLASS DUCT BOARD WITH FIRE RESISTANT FOIL-SCRIM-KRAFT FACING UL 181 CLASS I CLASSIFIED. ASSEMBLED WITH UL LISTED TAPE.
6. CUTTING AND INSTALLATION OF COLLARS FOR UL CLASSIFIED CLASS 0 OR 1 FLEXIBLE AIR DUCT CONNECTION BY OTHERS. MAXIMUM OF THREE.
7. DAMPER SUB-FRAME WITH 5/8" (16) MIN. PLASTER FLANGE. MIN. 26 GA. (0.55) GALVANIZED STEEL.
8. MODEL 0714 STEEL GRILLE/DIFFUSER (BY MAP OR OTHERS). BOTTOM OF DAMPER SUB-FRAME IS FLUSH WITH CEILING. STANDARD DEPTH FOR GRILLE CLEARANCE IS 2-1/2" (64).

**QUALIFICATIONS:**

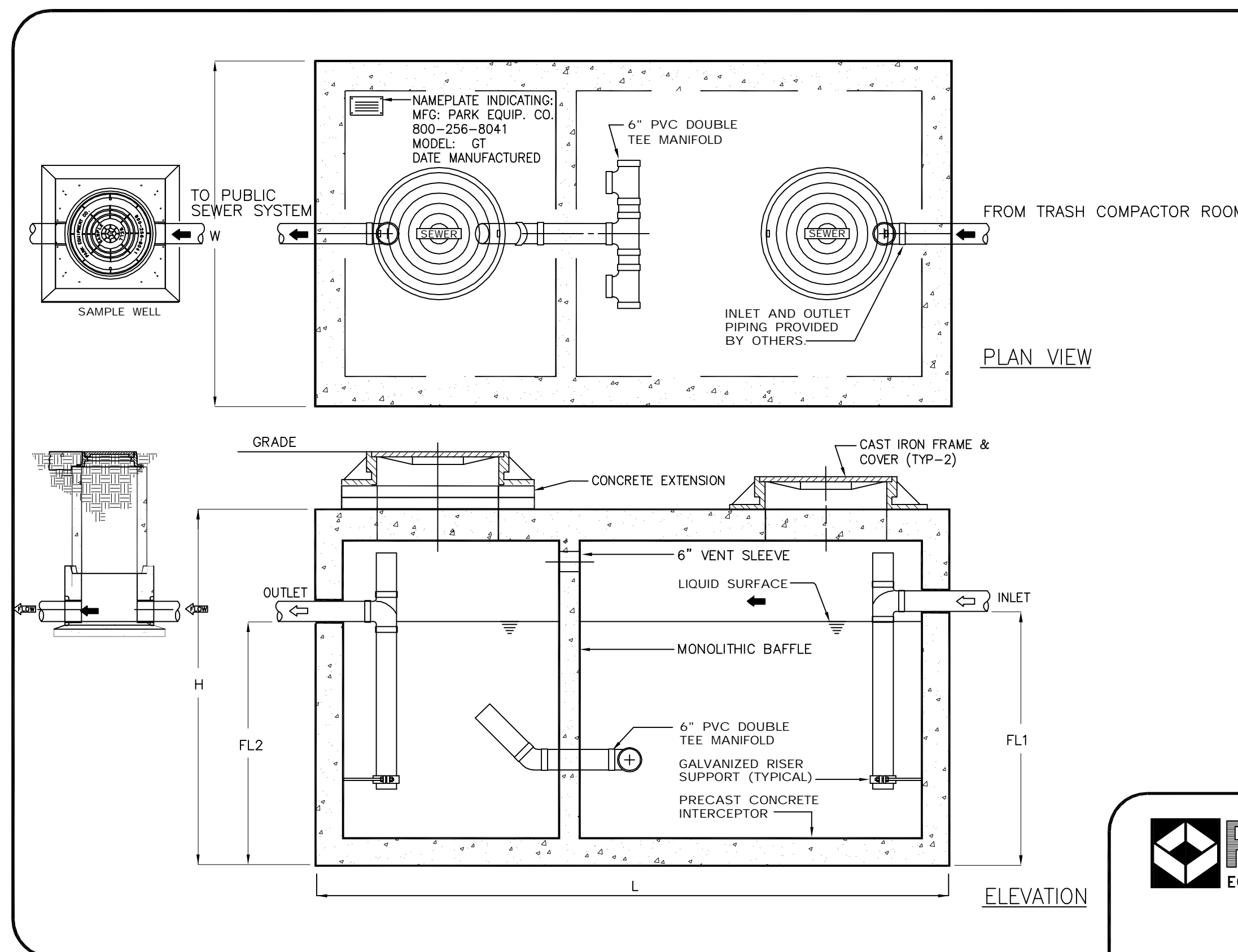
UL 263 CLASSIFIED CEILING RADIATION DAMPER CATEGORY CABS (FILE # 9660)  
1 HOUR RATED FOR USE IN UL FLOOR/CEILING DESIGN NUMBERS L550/L562/L574/L579 AND ROOF/CEILING DESIGN NUMBERS PS31/PS305/545, SIMILAR IN CONSTRUCTION TO DESIGNS L527/L546 AND PS22 RESPECTIVELY.

**MANUFACTURED AIR PRODUCTS.**  
DIVISION OF NAILOR INDUSTRIES, INC.



**CEILING RADIATION DAMPER  
FOR WOOD TRUSS CEILING ASSEMBLIES**  
FIBERGLASS PLENUM, SIDE INLET  
MODEL: CRD0757

**MANUFACTURED AIR PRODUCTS.**  
DIVISION OF NAILOR INDUSTRIES, INC.



| MODEL NO. | CAPACITY USGal | GREASE CAP. (LBS) | EMPTY WT (LBS) | LENGTH L | WIDTH W | HEIGHT H | INLET FL1 | OUTLET FL2 |
|-----------|----------------|-------------------|----------------|----------|---------|----------|-----------|------------|
| GT-750    | 750            | 1,700             | 11,000         | 7'-10"   | 4'-4"   | 6'-0"    | 4'-5"     | 4'-2"      |

OTHER SIZES ARE AVAILABLE. CONTACT US FOR MORE INFORMATION

| FIXTURE | QUANTITY | FIXTURE UNITS | TOTAL | SIZE*   |
|---------|----------|---------------|-------|---------|
| SINK    | 1        | 2             | 2     | 750 GAL |

\*SIZING BASED ON TABLE 10-3 2006 UPC

**Engineering Data**

The grease interceptor is structurally & hydraulically engineered to conform to regional plumbing codes recommended in most cities. Consult with local authorities for specific application requirements.

Shop drawings shall include complete structural & buoyancy calculations certified by a licensed professional engineer.

Consult with Park Equipment Company for exact excavation dimensions & shipping information.

| DFUS | INTERCEPTOR VOLUME |
|------|--------------------|
| 8    | 500 GALLON         |
| 21   | 750 GALLON         |
| 35   | 1000 GALLON        |
| 90   | 1250 GALLON        |
| 172  | 1500 GALLON        |
| 216  | 2000 GALLON        |

MAXIMUM DFUS FOR 6" SANITARY SEWER LINE SLOPED AT 1/8" PER FOOT = 576 DFUS  
GREASE TRAP TO BE 500 GALLON GREASE TRAP.

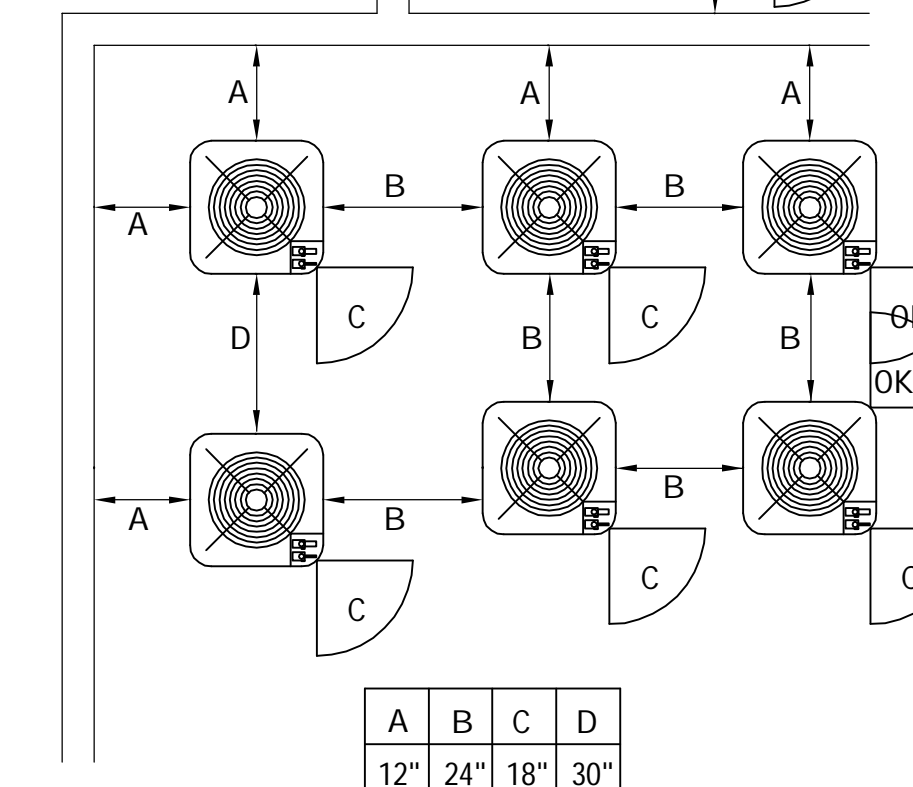
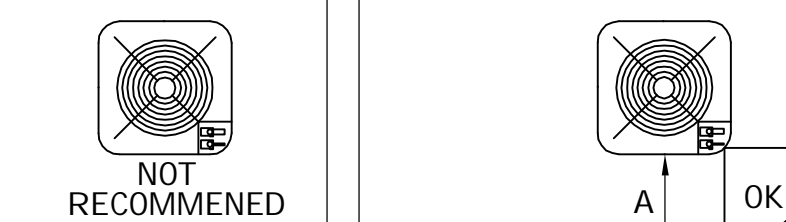
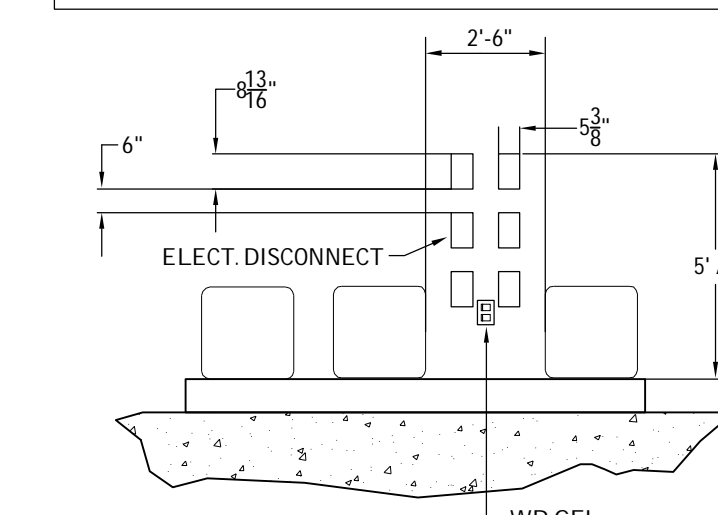


TEL (713) 937-7602  
FAX (713) 937-4254  
WATS (800) 256-8041

**GREASE TRAP SERIES GT**  
500 THRU 4000 GALLON CAPACITY

"Expect the Best"

SUBCONTRACTOR SHALL VERIFY CONDENSOR CABINET SIZE AND MANUFACTURER CLEARANCES AND SUBMIT PAD SHOP DRAWINGS INDICATING SUCH FOR ENGINEERS APPROVAL



| A   | B   | C   | D   |
|-----|-----|-----|-----|
| 12" | 24" | 18" | 30" |

**CONDENSER DETAIL**

N.T.S.

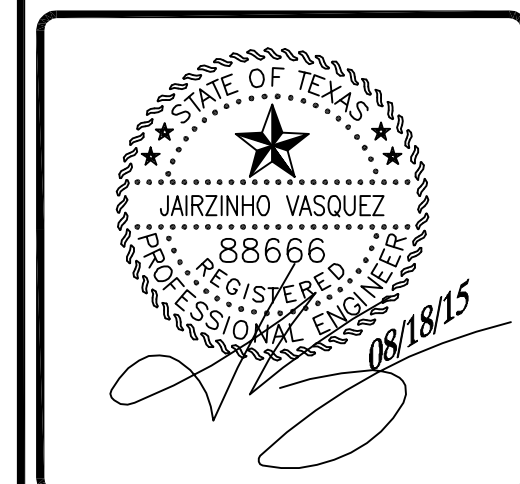


**MEP ENGINEERS**  
F-7762  
15603 GLEN CHASE  
HOUSTON, TEXAS 77095  
PHONE: 281-856-7682  
FAX: 281-856-2438  
Email: [MEP@HGECONSULTING.COM](mailto:MEP@HGECONSULTING.COM)

IF ANY OR ALL OF THIS DOCUMENT IS REPRODUCED, MODIFIED OR UNLAWFULLY DISTRIBUTED YOU WILL BE IN VIOLATION OF CONTRACT AND INFRINGING ON COPYRIGHT LAWS. IF YOU FEEL THAT THIS DOCUMENT HAS REACHED YOU IN ERROR PLEASE CONTACT THE ABOVE OFFICE AND DESTROY THE DOCUMENT. IF YOU CHOOSE NOT TO DO SO, YOU WILL BE SUBJECT TO PROSECUTION UNDER THE CURRENT COPYRIGHT LAWS.

| BY: | DESCRIPTION | DATE | NUMBER |
|-----|-------------|------|--------|
|     |             |      |        |
|     |             |      |        |
|     |             |      |        |
|     |             |      |        |
|     |             |      |        |
|     |             |      |        |
|     |             |      |        |
|     |             |      |        |
|     |             |      |        |

**KINGSLAND APTS.**  
HARRIS COUNTY, TEXAS



○ PROGRESS SET  
○ PERMIT ISSUE  
● CONSTRUCTION ISSUE  
DATE: 08/17/2015  
DRAWN BY: JA  
CHK'D BY: JV  
JOB: 919-15

**MEP-0.6**