

NOTE:
 PER 2015 IBC SECTION 3110
 3110.3 VEHICULAR GATES INTENDED FOR AUTOMATION. VEHICULAR GATES INTENDED FOR AUTOMATION SHALL BE DESIGNED, CONSTRUCTED AND INSTALLED TO COMPLY WITH THE REQUIREMENTS OF ASTM F2200.
 3110.4 VEHICULAR GATE OPENERS. VEHICULAR GATE OPENERS, WHERE PROVIDED, SHALL BE LISTED IN ACCORDANCE WITH UL 325.

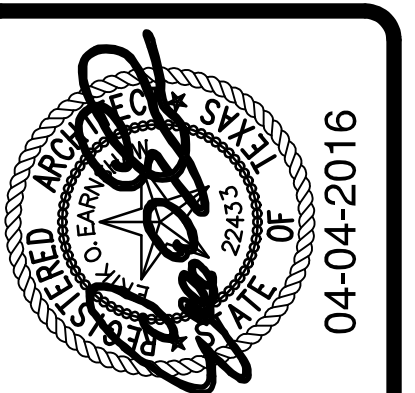
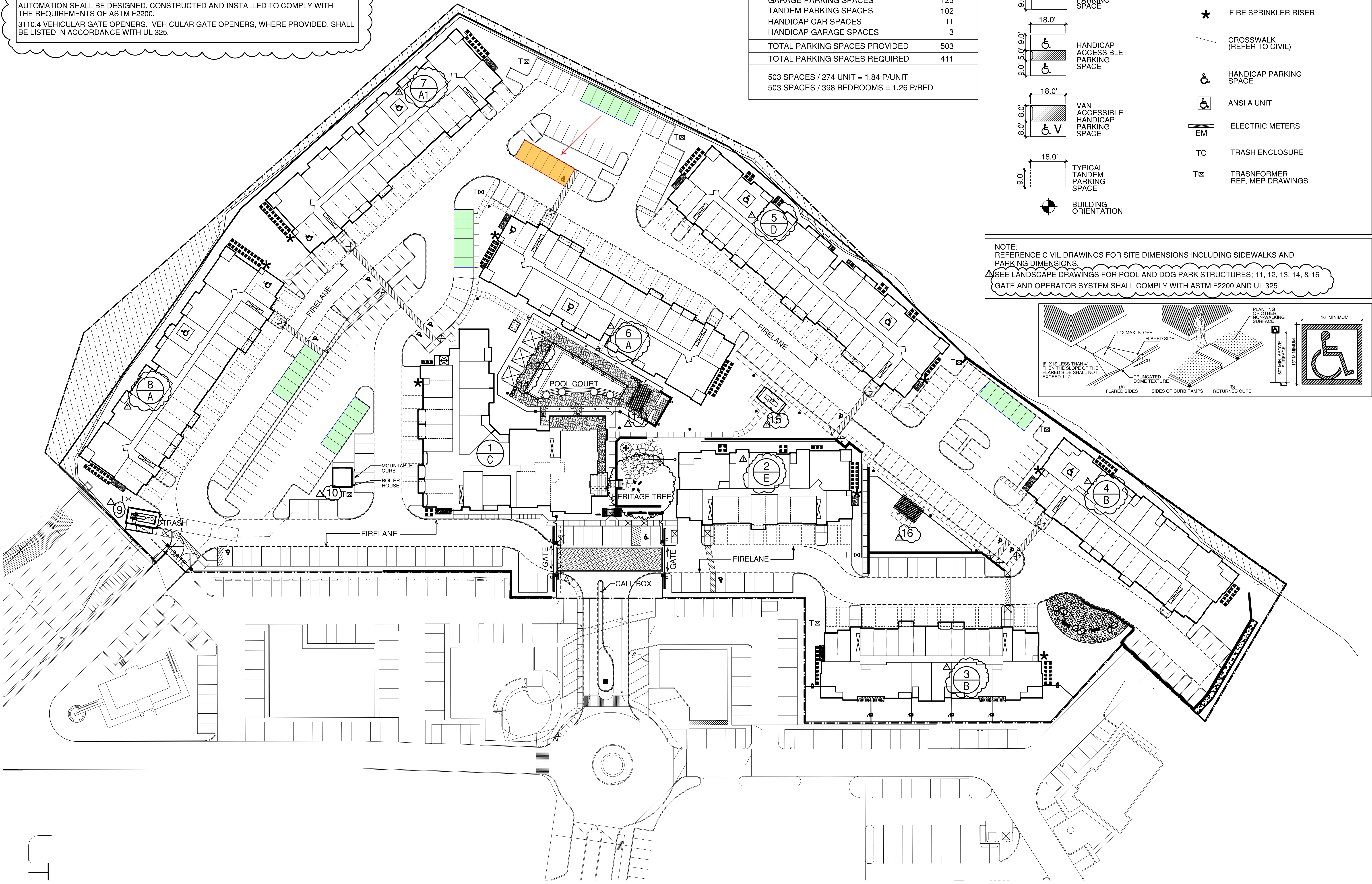
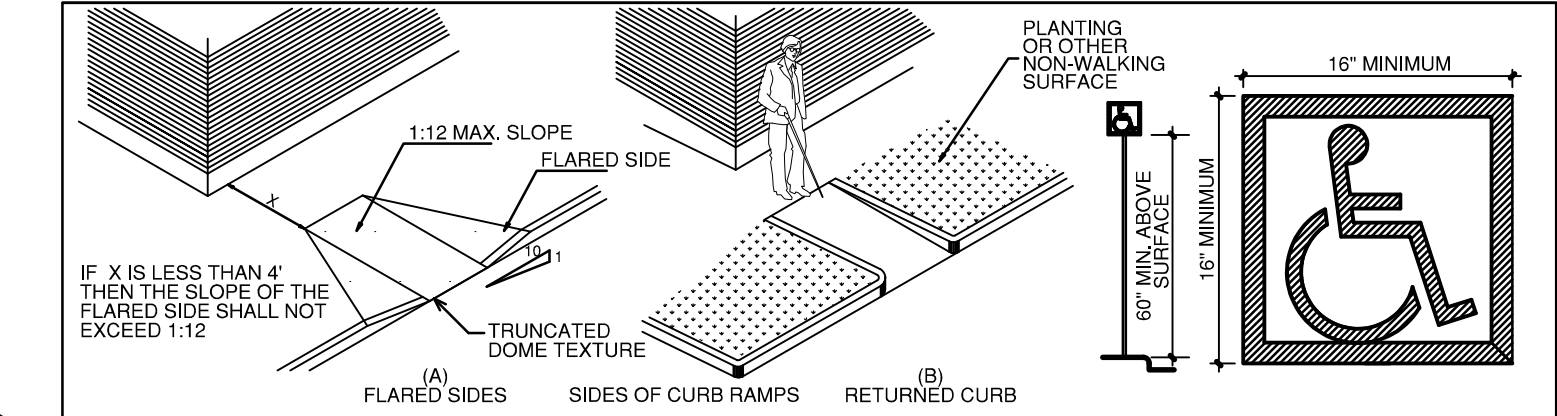
PARKING CATEGORY TOTALS	
SURFACE PARKING SPACES	262
GARAGE PARKING SPACES	125
TANDEM PARKING SPACES	102
HANDICAP CAR SPACES	11
HANDICAP GARAGE SPACES	3
TOTAL PARKING SPACES PROVIDED	503
TOTAL PARKING SPACES REQUIRED	411
503 SPACES / 274 UNIT = 1.84 P/UNIT	
503 SPACES / 398 BEDROOMS = 1.26 P/BED	

LEGEND

- # X BUILDING NUMBER
BUILDING TYPE
INDICATION
- * FIRE SPRINKLER RISER
- CROSSWALK (REFER TO CIVIL)
- ♿ HANDICAP PARKING SPACE
- ♿ ANSI A UNIT
- EM ELECTRIC METERS
- TC TRASH ENCLOSURE
- T☒ TRANSFORMER REF. MEP DRAWINGS

18.0' TYPICAL PARKING SPACE
 9.0' 18.0' 9.0' HANDICAP ACCESSIBLE PARKING SPACE
 9.0' 5.0' 9.0' 18.0' 8.0' VAN ACCESSIBLE HANDICAP PARKING SPACE
 18.0' 9.0' TYPICAL TANDEM PARKING SPACE
 BUILDING ORIENTATION

NOTE:
 REFERENCE CIVIL DRAWINGS FOR SITE DIMENSIONS INCLUDING SIDEWALKS AND PARKING DIMENSIONS.
 SEE LANDSCAPE DRAWINGS FOR POOL AND DOG PARK STRUCTURES; 11, 12, 13, 14, & 16
 GATE AND OPERATOR SYSTEM SHALL COMPLY WITH ASTM F2200 AND UL 325



REVISIONS

NO.	DATE	DESCRIPTION
1	01-19-2016	CITY COMMENTS

THE VILLAGE AT RIALTO
 SAN ANTONIO, TX

CONSTRUCTION SET
 ISSUED
 APRIL 4, 2016

BGO
 architects
 4202 Beltway Drive
 Dallas, TX 75001
 214.520.8878
 bgoarchitects.com

DATE
 04-04-2016

PROJECT
 14178

SHEET NUMBER

A1-01
 SITE PLAN

COPYRIGHT © Beiler, Guest, Owens Architects ALL RIGHTS RESERVED