



NO.	DATE	DESCRIPTION

NORTH CREEK
APARTMENTS IN HUNTO, TX
CMC COMMERCIAL REALTY GROUP

ISSUED 10-24-16
BID PERMIT SET

BGO architects
4002 Blawie Drive
Houston, TX 77057
713.462.6678
bgo@bgoarch.com

DATE
10-24-16

PROJECT
16128

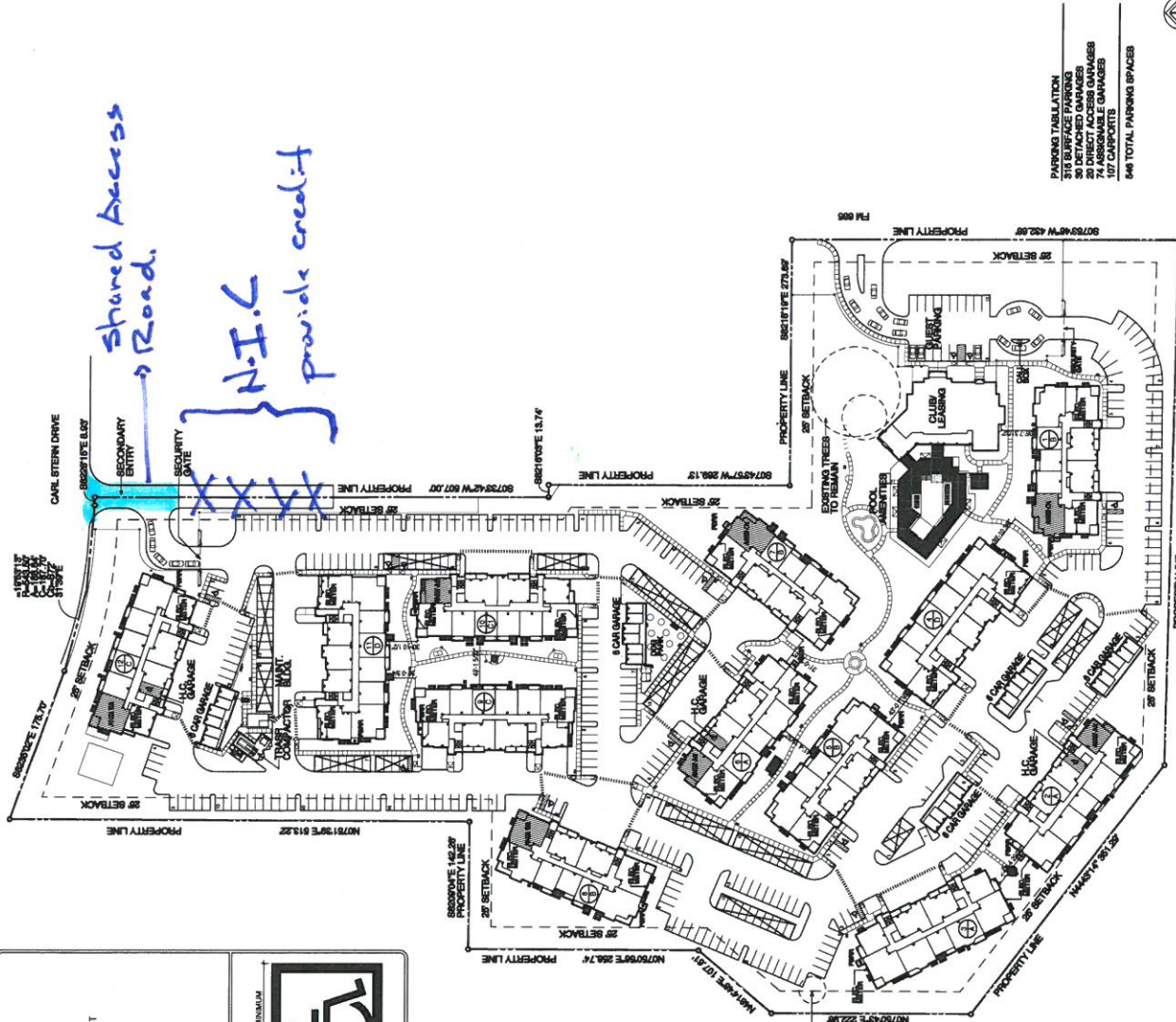
SHEET NUMBER
A1-01

SITE PLAN

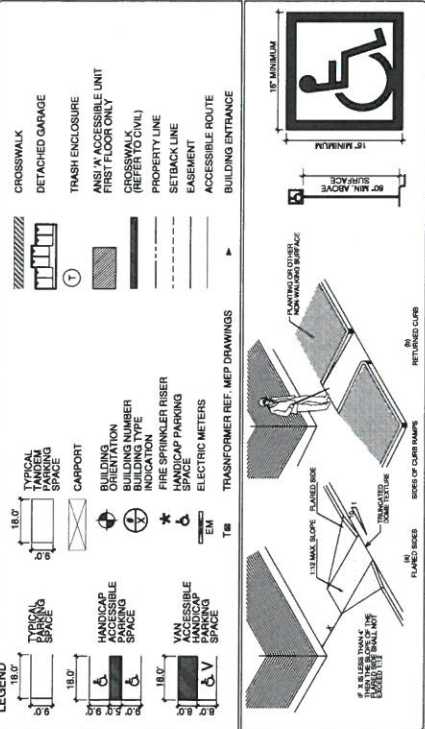
COPYRIGHT © BGO ARCHITECTS. ALL RIGHTS RESERVED.

1/2

Shared Access Road
N.I.C provide credit

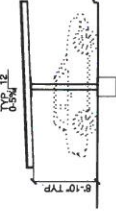


PARKING TABULATION
TOTAL PARKING SPACES
20 DETACHED GARAGES
20 DIRECT ACCESS GARAGES
177 AVAILABLE GARAGES
127 CAPSPOTS
646 TOTAL PARKING SPACES



CARPOT NOTES

- CARPOT TO HAVE GALVANIZED METAL STRUCTURE
- CARPOT TO HAVE GALVANIZED METAL ROOF PANELS
- CARPOT TO BE SUBMITTED AS A DEFERRED SUBMITTAL



2 CARPORT SECTION
SCALE: 1\"/>

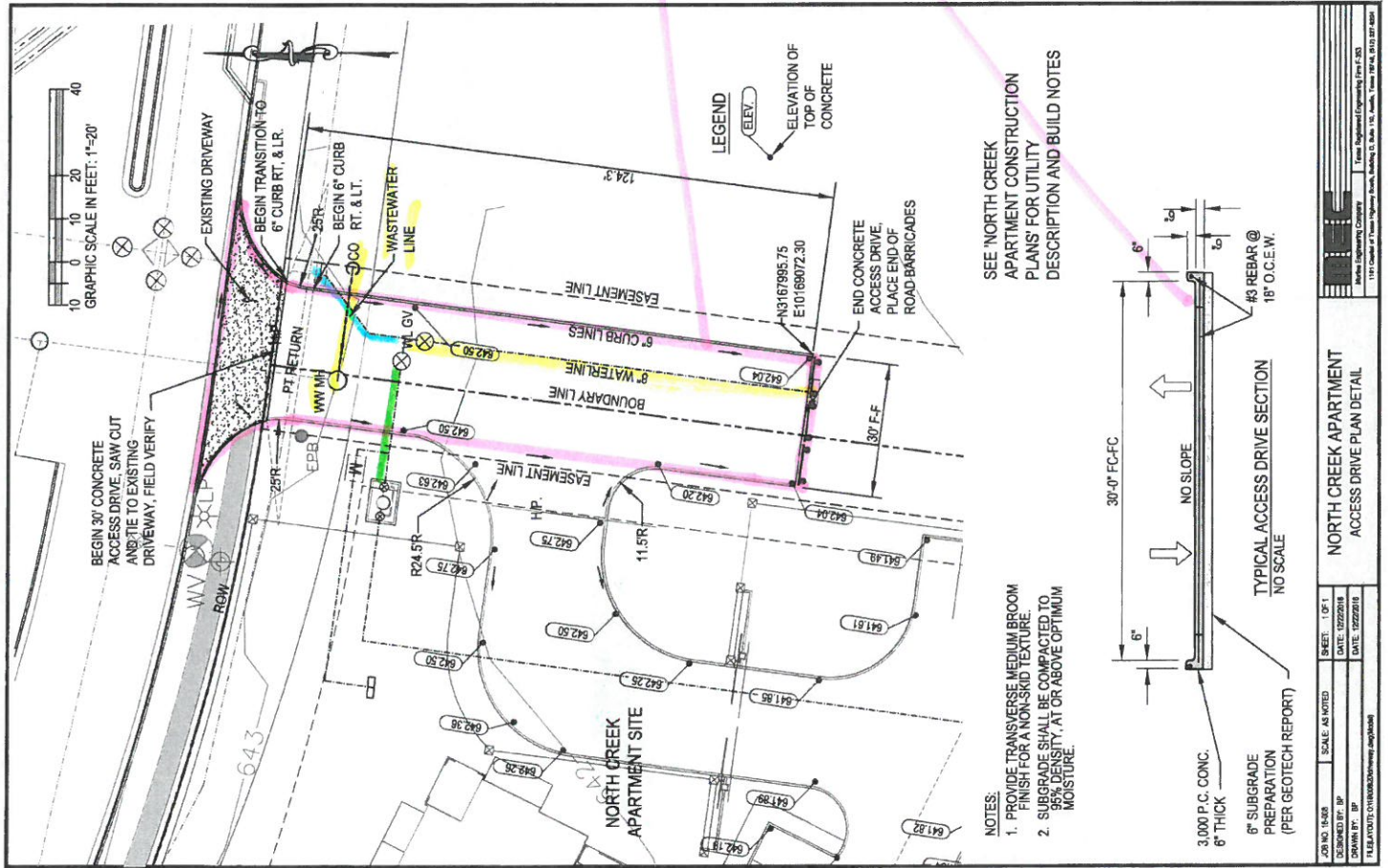
1 SITE PLAN
SCALE: 1\"/>

SHARED ACCESS ROAD EXHIBIT

2/2

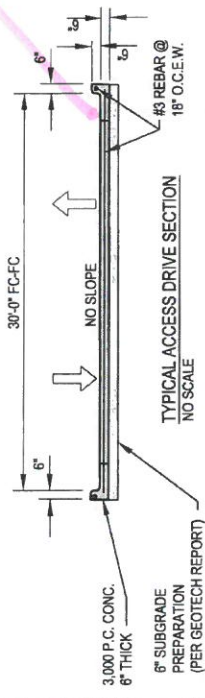
- Saller's 100% curst
- Shared Cost S/S/SD
- North Creek Residential L.P. 100% curst.

Flatwork, subgrade and Barricades are Shared Cost S/S/SD



SEE 'NORTH CREEK APARTMENT CONSTRUCTION PLANS' FOR UTILITY DESCRIPTION AND BUILD NOTES

- NOTES:
1. PROVIDE TRANSVERSE MEDIUM BROOM FINISH FOR A NON-SKID TEXTURE.
 2. SUBGRADE SHALL BE COMPACTED TO 95% DENSITY, AT OR ABOVE OPTIMUM MOISTURE.



NORTH CREEK APARTMENT ACCESS DRIVE PLAN DETAIL	
JOB NO. 14-00	SHEET: 1 OF 1
DESIGNED BY: BP	DATE: 07/20/18
DRAWN BY: BP	DATE: 07/20/18
FILE PATH: C:\Users\bp\AppData\Local\Temp\14-00\Drawings\apartment	1101 Columbia Pike, Suite 100, Falls Church, VA 22046